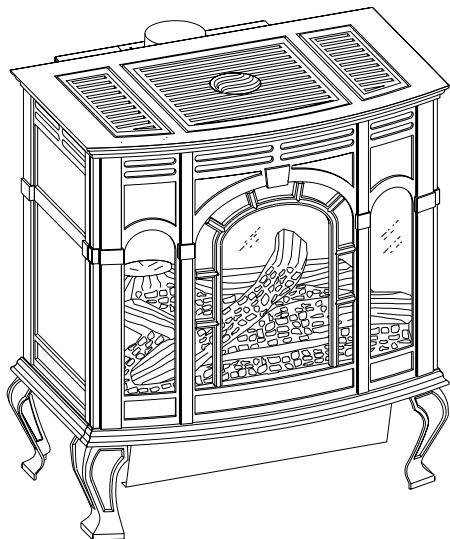




INSTALLATION INSTRUCTIONS AND OWNER'S MANUAL



CAST IRON VENTED FIREPLACE HEATER

MODEL
CIBV-30-2



EFFECTIVE DATE
APRIL, 2000

WARNING: If the information in this manual is not followed exactly, a fire or explosion may result causing property damage, personal injury or loss of life. Installation and service must be performed by a qualified installer, service agency, or the gas supplier. Do not store or use gasoline or other flammable vapors and liquids in the vicinity of this or any other appliance.

AVERTISSEMENT: Quiconque ne respecte pas à la lettre les instructions dans le présent manuel risque de déclencher un incendie ou une explosion entraînant des dommages matériels, des lésions corporelles ou la perte de vies humaines. Installation ou modification, consulter le manuel des usagers fourni avec ce générateur d'air chaud. Ne pas entreposer ni utiliser d'essence ni d'autres vapeurs ou liquides inflammables dans le voisinage de cet appareil ou de tout autre appareil.

FOR YOUR SAFETY: What to do if you smell gas:

- Do not touch any electrical switches
- Do not try to light any appliance.
- Do not use the phone in your building.
- Immediately call your gas supplier from a neighbor's phone.
- Follow the gas supplier's instructions.
- If you cannot reach your gas supplier, call the fire department.

POUR VOTRE SÉCURITÉ: Que faire si vous sentez une odeur de gaz:

- Ne pas tenter d'allumer d'appareil.
- Ne touchez à aucun interrupteur. Ne pas vous servir des téléphones se trouvant dans le bâtiment où vous vous trouvez.
- Évacuez la pièce, le bâtiment ou la zone.
- Appelez immédiatement votre fournisseur de gaz depuis un voisin. Suivez les instructions du fournisseur.
- Si vous ne pouvez rejoindre le fournisseur de gaz, appelez le service des incendies.

Introduction

Always consult your local Building Department regarding regulations, codes or ordinances which apply to the installation of a vented fireplace heater.

Instructions to Installer

1. Installer must leave instruction manual with owner after installation.
2. Installer must have owner fill out and mail warranty card supplied with heater.
3. Installer should show owner how to start and operate heater and thermostat.

WARNING: Any change to this fireplace heater or its controls can be dangerous. Any safety screen or guard removed for servicing a fireplace heater must be replaced prior to operating the fireplace heater.

General Information

This appliance is design certified in accordance with American National Standard /Canadian Gas Association Standard ANSI Z21.88-1998 and CSA 2.33-M98 by the American Gas Association and Canadian Gas Association, as a Vented Fireplace Heater and must be installed according to these instructions.

Any alteration of the original design, installed other than as shown in these instructions or use with a type of gas not shown on the rating plate is the responsibility of the person and company making the change.

Important

All correspondence should refer to complete Model No., Serial No. and type of gas.

Notice: During initial firing of this unit, its paint will bake out and smoke will occur. To prevent triggering of smoke alarms, ventilate the room in which the unit is installed.

Installation on Rugs and Tile

If this appliance is to be installed directly on carpeting, tile, or other combustible material, *other than wood flooring*, the appliance shall be installed on a metal or wood panel extending the full width and depth of the appliance.

The base referred to above does not mean the fire-proof base as used on wood stoves. The protection is primarily for rugs that may be extremely thick and light-color tile that can discolor.

WARNING: If not installed, operated and maintained in accordance with the manufacturer's instructions, this product could expose you to substances in fuel or from fuel combustion which can cause death or serious illness.

Specifications

Model	CIBV-30
Input BTU/HR (KW/H) Max. (LP/NAT)	30,000 (8.7)
BTU/HR (KW/H) Min. (LP)	22,000 (6.4)
BTU/HR (KW/H) Min. (NAT)	19,500 (5.7)
Height	27 3/4" (8.7cm)
Width	25 1/2" (64.8cm)
Depth including diverter	21" (53.3cm)
Gas Inlet	1/2" (13mm)
Size Draft Diverter Collar	4" (10.16cm)
Floor to top of collar on vertical position of Draft Diverter	27 3/8" (69.5cm)
Floor to center of collar on horizontal position of Draft Diverter	23 1/2" (59.7cm)

Stove Casting (Must be ordered with Firebox.)

CIFB-1	Flat Black
CIPB-1	Porcelain Black
CIPG-1	Porcelain Green
CIPS-1	Porcelain Sand
CIPN-1	Porcelain Navy
CIPR-1	Porcelain Red

Accessories

GWSG-T	750 Millivolt Thermostat
FRBC-1	Battery Operated Remote Control
FRBTC-1	Battery Operated Remote Control with Thermostat
FREC-1	Electric Remote Control
FWS-1	Wall Switch
CIB-2	Automatic Blower

Stone Inlay Replaces Standard Grille Top

CII-2	Stone Inlay	Empress Green
CII-3	Stone Inlay	Hunan Jade
CII-4	Stone Inlay	Gray Botticino
CII-5	Stone Inlay	Azul
CII-6	Stone Inlay	Salome
CII-7	Stone Inlay	Black Swan

WARNING: Do not operate appliance with the glass front removed, cracked or broken. Replacement of the glass should be done by a licensed or qualified service person.

THIS IS A HEATING APPLIANCE

DO NOT OPERATE THIS APPLIANCE WITHOUT FRONT PANEL INSTALLED.

- Due to high temperatures, the fireplace heater should be located out of traffic and away from furniture and draperies.
- Children and adults should be alerted to the hazards of high surface temperature and should stay away to avoid burns or clothing ignition.
- Young children should be carefully supervised when they are in the same room as the fireplace heater.
- Clothing or other flammable material should not be placed on or near the fireplace heater.
- Surveiller les enfants. Garder les vêtements, les meubles, l'essence ou autres liquides à vapeur inflammables loin de l'appareil.
- Due to high surface temperatures, keep children, clothing and furniture away.
- The glass front or any part removed for servicing the appliance must be replaced prior to operating the appliance. Work should be done by a qualified service person.
- Keep burner and control compartment clean.
- Installation and repair should be done by a QUALIFIED SERVICE PERSON. The fireplace heater should be inspected before use and at least annually by a qualified service person. More frequent cleaning may be required due to excessive lint from carpeting, bedding material, etc. It is imperative that control compartments, burners and circulating air passageways of the fireplace heater be kept clean.
- S'assurer que le brûleur et le compartiment des commandes sont propres. Voir les instructions d'installation et d'utilisation qui accompagnent l'appareil.
- DO keep the appliance area clear and free from combustible material, gasoline and other flammable vapors and liquids.
- DO examine burners periodically. Clean and replace damaged parts.
- CAUTION: The glass used in your heater is a special high temperature ceramic glass. If the glass is cracked or damaged in any way, it should be replaced only with a complete glass frame assembly from Empire. See parts list on Page 18 for ordering.
- DO NOT use this heater if any part has been under water. Immediately call a qualified service technician to inspect the heater and to replace any part of the control system and any gas control which has been under water.
- Ne pas se servir de cet appareil s'il a été plongé dans l'eau, complètement ou en partie. Appeler un technicien qualifié pour inspecter l'appareil et remplacer toute partie du système de contrôle et toute commande qui ont été plongés dans l'eau.
- Under no circumstances should any solid fuels (wood, coal, paper or cardboard etc.) be used in this appliance.

SAFETY INFORMATION FOR USERS OF LP-GAS

Propane (LP-Gas) is a flammable gas which can cause fires and explosions. In its natural state, propane is odorless and colorless. You may not know all the following safety precautions which can protect both you and your family from an accident. Read them carefully now, then review them point

by point with the members of your household. Someday when there may not be a minute to lose, everyone's safety will depend on knowing exactly what to do. If, after reading the following information, you feel you still need more information, please contact your gas supplier.

LP-GAS WARNING ODOR

If a gas leak happens, you should be able to smell the gas because of the odorant put in the LP-Gas. That's your signal to go into immediate action!

- Do not operate electric switches, light matches, use your phone. Do not do anything that could ignite the gas.
- Get everyone out of the building, vehicle, trailer, or area. Do that IMMEDIATELY.
- Close all gas tank or cylinder supply valves.
- LP-Gas is heavier than air and may settle in low areas such as basements. When you have reason to suspect a gas leak, keep out of basements and other low areas. Stay out until firefighters declare them to be safe.
- Use your neighbor's phone and call a trained LP-Gas service person and the fire department. Even though you may not continue to smell gas, do not turn on the gas again. Do not re-enter the building, vehicle, trailer, or area.
- **Finally**, let the service man and firefighters check for escaped gas. Have them air out the area before you return. Properly trained LP-Gas service people should repair the leak, then check and relight the gas appliance for you.

NO ODOR DETECTED - ODOR FADE

Some people cannot smell well. Some people cannot smell the odor of the chemical stench put into the gas. You must find out if you can smell the odorant in propane. Smoking can decrease your ability to smell. Being around an odor for a time can affect your sensitivity or ability to detect that odor. Sometimes other odors in the area mask the gas odor. People may not smell the gas odor or their minds are on something else. Thinking about smelling a gas odor can make it easier to smell.

The odorant in LP-gas is colorless, and it can fade under some circumstances. For example, if there is an underground leak, the movement of the gas through soil can filter the odorant. Odorants in LP-Gas also are subject to oxidation. This fading can

occur if there is rust inside the storage tank or in iron gas pipes.

The odorant in escaped gas can adsorb or absorb onto or into walls, masonry and other materials and fabrics in a room. That will take some of the odorant out of the gas, reducing its odor intensity.

LP-Gas may stratify in a closed area, and the odor intensity could vary at different levels. Since it is heavier than air, there may be more odor at lower levels. Always be sensitive to the slightest gas odor. If you detect any odor, treat it as a serious leak. Immediately go into action as instructed earlier.

SOME POINTS TO REMEMBER

- **Learn to recognize the odor of LP-gas.** Your local LP-Gas Dealer can give you a "Scratch and Sniff" pamphlet. Use it to find out what the propane odor smells like. If you suspect that your LP-Gas has a weak or abnormal odor, call your LP-Gas Dealer.
- If you are not qualified, do not light pilot lights, perform service, or make adjustments to appliances on the LP-Gas system. If you are qualified, consciously think about the odor of LP-Gas prior to and while lighting pilot lights or performing service or making adjustments.
- Sometimes a basement or a closed-up house has a musty smell that can cover up the LP-Gas odor. Do not try to light pilot lights, perform service, or make adjustments in an area where the conditions are such that you may not detect the odor if there has been a leak of LP-Gas.
- Odor fade, due to oxidation by rust or adsorption on walls of new cylinders and tanks, is possible. Therefore, people should be particularly alert and careful when new tanks or cylinders are placed in service. Odor fade can occur in new tanks, or reinstalled old tanks, if they are filled and allowed to set too long before refilling. Cylinders and tanks which have been out of service for a time may develop internal rust which will cause odor fade. If such conditions are suspected to exist, a periodic sniff test of the gas is advisable. **If you have any question about the gas odor, call your LP-gas dealer. A periodic sniff test of the LP-gas is a good safety measure under any condition.**
- If, at any time, you do not smell the LP-Gas odorant and you think you should, assume you have a leak. Then take the same immediate action recommended above for the occasion when you do detect the odorized LP-Gas.
- If you experience a complete "gas out," (the container is under no vapor pressure), turn the tank valve off immediately. If the container valve is left on, the container may draw in some air through openings such as pilot light orifices. If this occurs, some new internal rusting could occur. If the valve is left open, then treat the container as a new tank. Always be sure your container is under vapor pressure by turning it off at the container before it goes completely empty or having it refilled before it is completely empty.

Qualified Installing Agency

Installation and replacement of gas piping, gas utilization equipment or accessories and repair and servicing of equipment shall be performed only by a qualified agency. The term "qualified agency" means any individual, firm, corporation, or company which whether in person or through a representative is engaged in and is responsible for (a) the installation or replacement of gas piping or (b) the connection, installation, repair or servicing of equipment, who is experienced in such work, familiar with all precautions required and has complied with all the requirements of the authority having jurisdiction.

The installation must conform with local codes or, in the absence of local codes, the current National Fuel Gas Code-ANSI Z223.1* (NFPA 54) or CAN1-B149-Gas Appliance Installation Code.

Installer l'appareil selon les codes ou règlements locaux, ou, en l'absence de tels règlements, selon les Codes d'installation CAN/CGA-B149.

*Available from the American National Standards Institute, Inc., 11 West 42nd St., New York, N.Y. 10036.

Locating and Venting the Fireplace Heater (Figures 1, 2 and 3)

Clearances: When facing the front of the fireplace heater the minimum clearances to combustible construction (material) are the following:

Open in front to provide service, access, and clearance to construction.

Top of appliance (ceiling)	36 (inches)
Draft Diverter to Rear Wall	2 (inches)
Side Wall	6 (inches)
Heater Corners (45° angle) to Wall	4 (inches)
Floor	0 (inches)

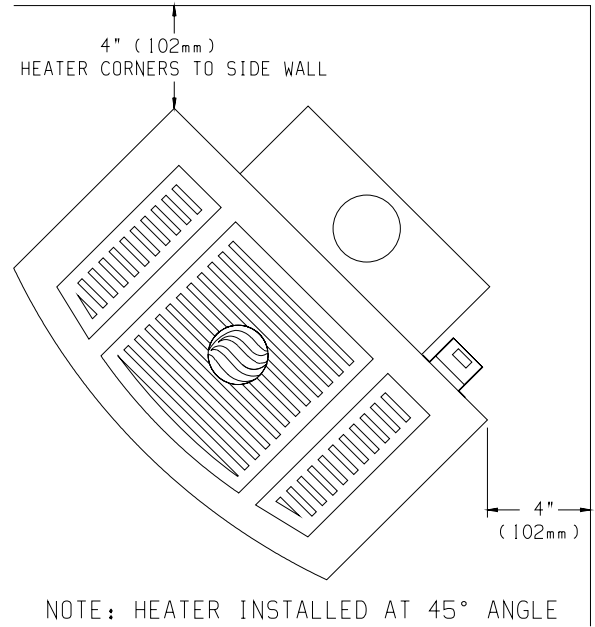


Figure 2

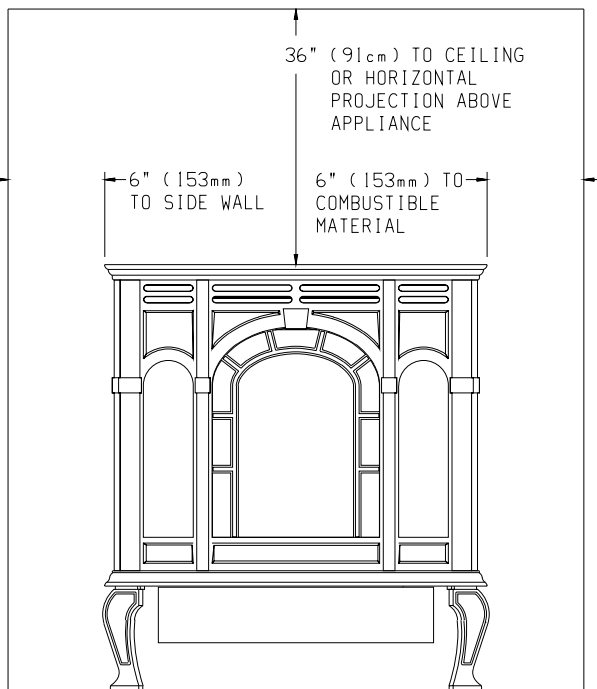


Figure 1

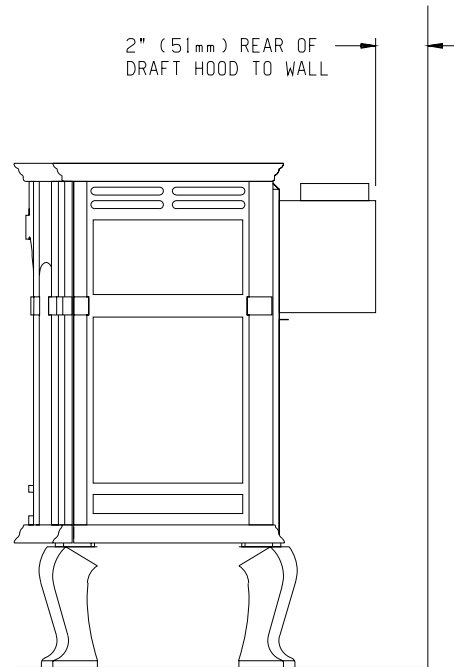


Figure 3

Appliance Hardware Package Parts List

Part Description	Part Number	Quantity Supplied
1/4-20 x 1" Phillips Head Bolt	R-3188	4
1/4-20 x 3/8" Phillips Head Bolt	R-3646	16
1/4-20 x 1/2" Leveling Bolt	R-3747	4
No. 10 x 1/2" Hex Washer Head Screw	R-2737	6
1/4-20 Washer Head Nut	R-3185	4
Leg Pad "A" (see Figure 5)	CI-008	2
Leg Pad "B" (see Figure 5)	CI-009	2
1-1/4" x 1/2" Retaining Tab (see Figure 8)	CI-007	4
1/4 x 9/32 Washer (Not Shown)	R-1150	8

Appliance Hardware Package (Figure 4)

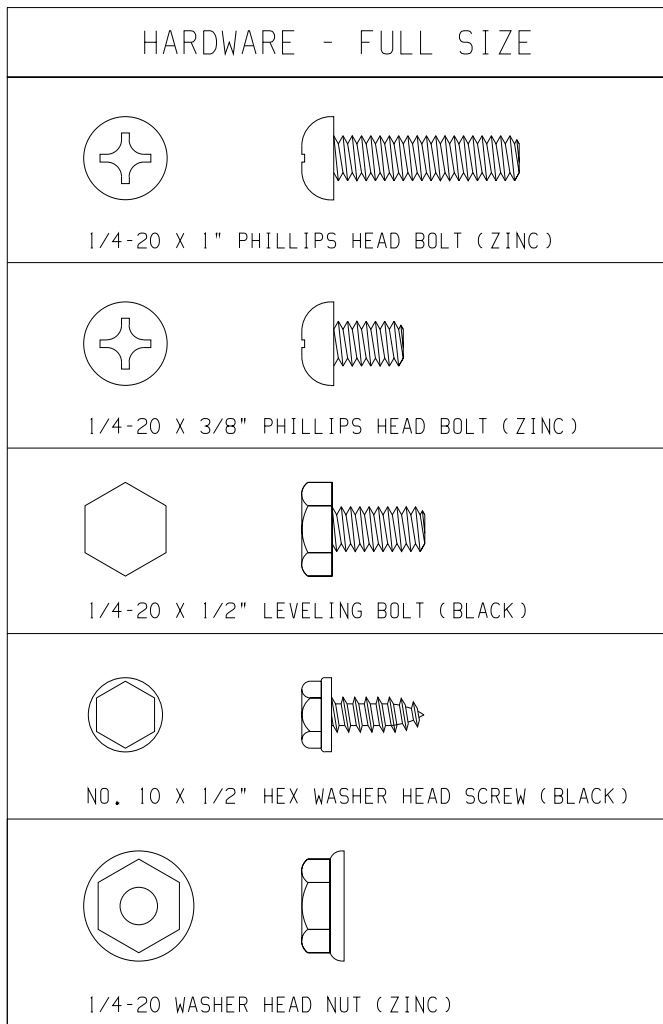


Figure 4

Assembly of Cast Iron (Outer Casing) Stove Casting (Figures 5, 6, 7, 8 and 9)

Attention: Included in the hardware package are (8) 1/4" inside diameter washers. A 1/4" washer may be used with a 1/4-20 x 3/8" bolt when assembling the stove casting parts. If a bolt hole is not tapped deep enough for a tight fit between stove casting parts, the 1/4" washer can be used as a shim to provide a tight fit.

The 1/4" washers are not required for assembly of the stove casting if all the bolt holes are tapped to a proper depth.

Additional 1/4" washers are to be purchased locally.

- Place porcelain casting pieces on a non-abrasive surface in order to protect the porcelain finish. The exterior of the porcelain casting pieces should be facing the non-abrasive surface.
- The assembly of the casting is accomplished in 6 stages:
 - Attaching legs to the sides (Figure 5).
 - Attaching rear cover to sides (Figure 6).
 - Removing protective packaging from casing front and window (Figure 7).
 - Assembly of front by attaching retaining tabs and placing front on unit (Figure 8).
 - Inserting firebox into partially completed assembly (Figure 9).
 - Placing top on unit.
- Refer to Figure 5, the leg pads will have the letter "A" and "B" stamped into the metal. Place leg pad "A" and leg pad "B" at the bottom of each casing side. Leg pad "A" attaches to the front of the casing side, right and to the rear of the casing side, left. Leg pad "B" attaches to the rear of the casing side, right and to the front of the casing side, left. Position the 3/4" flange on the leg pad against the (2) locator dimples on the casing side. The 3/4" flange must be facing upward, toward the top louver openings on the casing side. Attach the two **rear** leg pads to the casing sides with (2) 3/8" bolts. Attach but do not completely tighten the two **front** leg pads to the casing sides with (2) 3/8" bolts. **Attention:** The front leg pads can be adjusted to provide a snug fit between the casing front and the casing sides.
- Attach (4) leveling bolts to the bottom of the (4) legs.
- Align the 3/8" hole at the top of the leg with the 3/8" hole in the leg pad. **Attention:** For proper positioning of the leg to the leg pad the (2) 1-1/2" top edges of the leg must be placed flush and parallel to the (2) edges on the leg pad. Attach leg to leg pad by inserting (1) 1" bolt through the leg pad and into the leg, secure bolt with 1/4" nut.
- Insert (2) 3/8" bolts into the (2) holes on the edges of the casing sides. The bolts should only be threaded half-way into the holes in order to allow for clearance when the casing back is attached to the casing sides.
- Refer to Figure 6, the rear cover has (4) keyholes for attachment to the casing sides. Stand the casing sides on the floor with the (2) bolts attached half-way into the edges of the rear cover positioned at the rear. The large diameter holes in the keyholes of the rear cover will be toward the floor. Working with one casing side at a time, place the large diameter holes in the keyholes over and behind both of the bolts at the same time. Push downward on the rear cover to lock the keyholes into position behind the bolts. Finish tightening both bolts to secure rear cover to casing side. Repeat this procedure to secure rear cover to the second casing side.

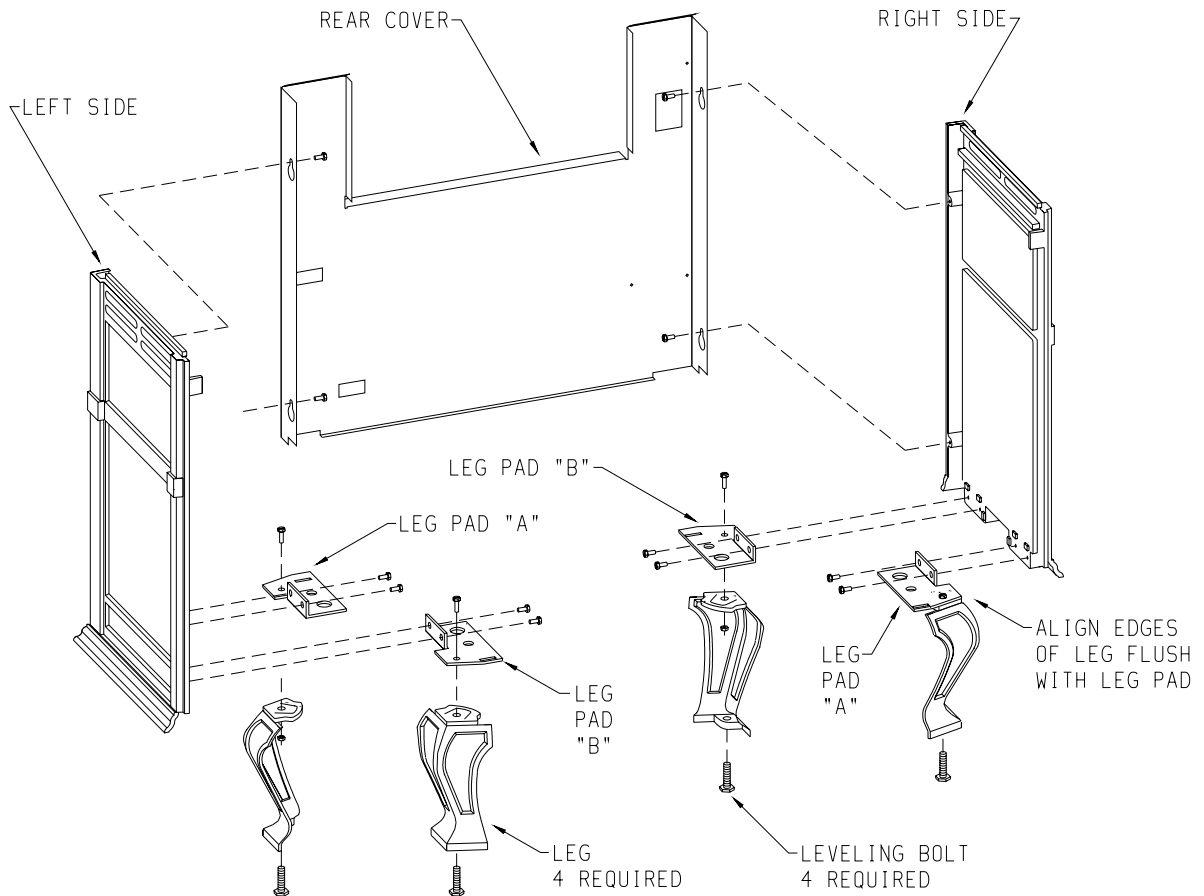


Figure 5

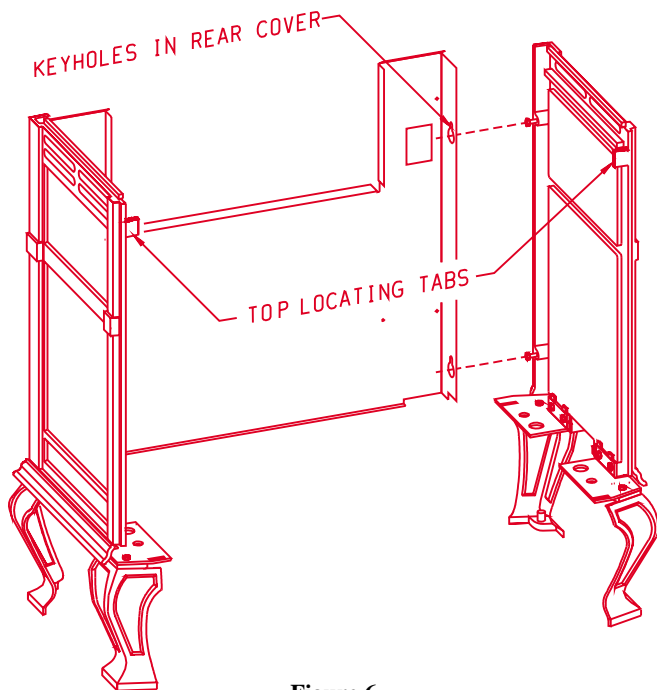


Figure 6

8. Position the completed portion of the casing in the approximate location for installation as the completed assembly will be heavy.
9. Refer to Figure 7, removing protective packing foam from casing front and window. Remove the (1) 3/4" bolt and (1) 1/4" washer from top of window. Remove (1) 3/8" bolt and 1 - 5/8" x 3/4" retaining tab from bottom of window. Remove the window from casing front. Remove the protective sheet of foam from the casing front.

Place the window into the casing front. Attach the top of the window to the casing front with (1) 1/4" washer and (1) 3/4" bolt. Place the 1 - 5/8" x 3/4" retaining tab into the locator notch on the bottom of the casing front. Attach the bottom of the window to the casing front by inserting (1) 3/8" bolt through retaining tab and into locator notch.

10. Attach the (4) 1-1/4" x 1/2" retaining tabs to the casing front with (4) 3/8" bolts. The retaining tabs should be positioned downward, from the casing front, top to the casing front, bottom.
11. Refer to Figure 8, attach casing front to outer casing by using the (4) retaining tabs on the casing front. The (2) top, retaining tabs on the casing front will be placed behind the (2) top, locator tabs on the front of the casing sides. The (2) bottom, retaining tabs will be inserted into the (2) 9/16" slots on the front, leg pads. Place the top, retaining tabs behind the top, locator tabs as you pivot inward the bottom of the casing front in order to insert the bottom, retaining tabs into the slots.
12. The following procedure will provide a snug fit between the casing front and the casing sides. Grasp the right, front leg, push inward on the leg in order to provide a snug fit between the casing front and the casing side. Continue to hold the right, front leg as you completely tighten the (2) 3/8" bolts that attach the leg pad to the right, casing side. Repeat procedure for left, front leg to achieve a snug fit between the casing front and the casing side.
13. Remove the casing front from the outer casing.

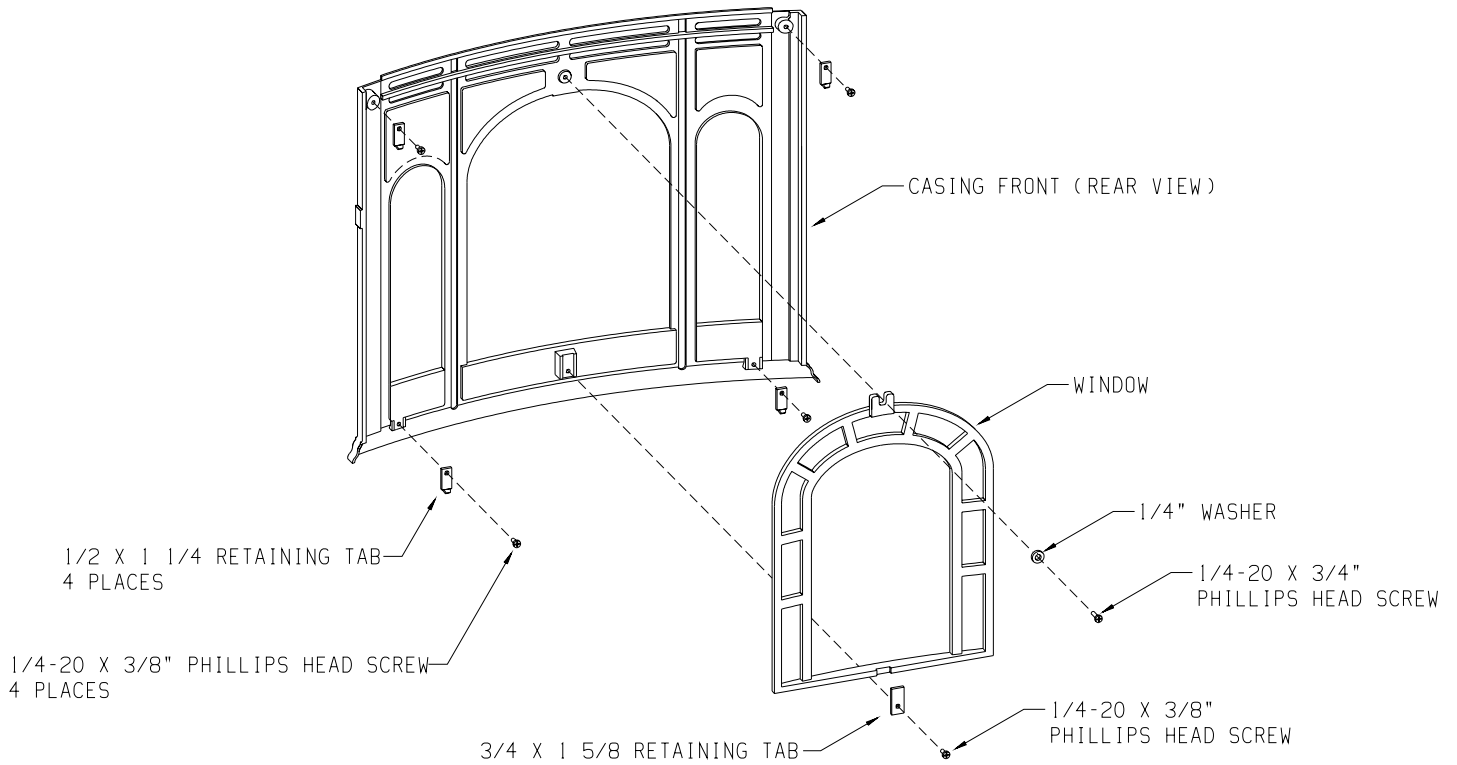


Figure 7

- 17. Insert center grille, left grille and right grille into casing top.
- 18. Level appliance by adjusting leveling bolts.
- 19. Assembly of cast iron (outer casing) stove casting is completed.

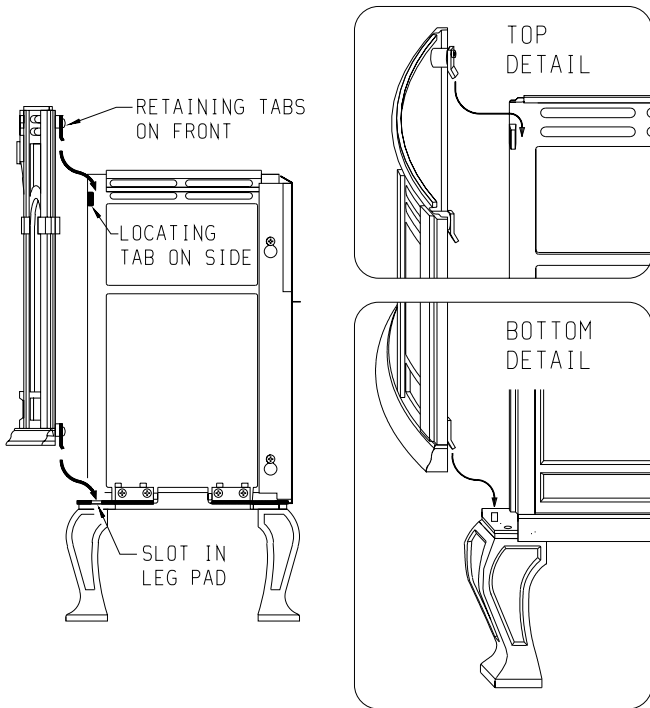


Figure 8

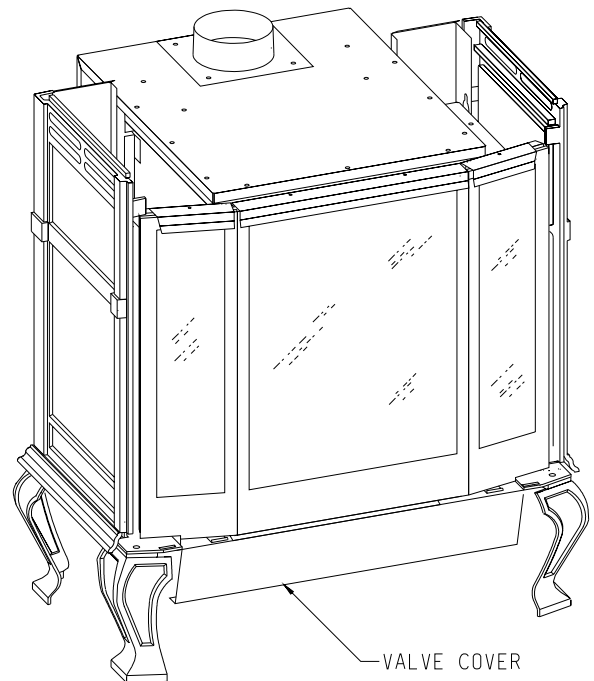


Figure 9

- 14. Refer to Figure 9, the appliance firebox can now be inserted into the outer casing. Center the firebox in the outer casing. **Attention:** Remove (1) Phillips-head screw in the top of the valve cover. The screw is used to secure the valve cover in place during shipping. The (1) Phillips-head screw can be discarded.
- 15. Attach casing front to outer casing as described in Step 11.
- 16. Place the casing top onto the outer casing. The casing top nests into the outer casing.

Stone Inlay Replacement of Standard Grille Top

Whenever the standard grille top is replaced with a stone inlay you must install the top shield and heat shield, which are provided with the stone inlay.

Installation of Optional Stone Inlay

1. Remove left grille, center grille and right grille from casing top.
2. Remove casing top from outer casing.
3. Place the casing top on a non-abrasive surface in order to protect the porcelain finish. The exterior of the casing top should be facing the non-abrasive surface.
4. Attach 11 5/8" x 11 5/8" top shield to the interior of the casing top with (1) 3/8" bolt provided in hardware package.
5. Remove the (2) 1/2" hex-head screws located on the front of the heat exchanger top. The screws are 8 3/4" apart. Do not remove the center hex-head screw. Remove the (2) screw hole, knockouts located on the back of the heat exchanger top. The knockouts are 8 3/4" apart. Position the angled front on the 12" x 19 3/8" heat shield with the front of the appliance. Align the (4) tabs with clearance holes on the 12" x 19 3/8" heat shield with the (4) screw holes on the heat exchanger top. Attach the 12" x 19 3/8" heat shield to the heat exchanger top with (2) 1/2" hex-head screws removed in Step 5 and (2) 1/2" hex-head screws provided in hardware package.
6. Place the casing top onto the outer casing. The casing top nests into the outer casing.
7. Insert center stone inlay, left stone inlay and right stone inlay into casing top.
8. Installation of stone inlay is completed.

Parts List

Part Description	Part Number	Quantity Supplied
11 5/8" x 11 5/8" Top Shield	CI-091	1
12" x 19 3/8" Heat Shield	CI-092	1
3/8" Bolt	R-3646	1
1/2" Hex-Head Screw	R-2737	4

Installation of Wire Channel Assembly (Figure 10)

The ON/OFF/REMOTE switch with harness is factory installed into the switch box.

After the appliance housing is installed into the cast iron outer casing the wire channel can be installed.

1. Attach switch box on the left side of casing back with (2) 10 x 1/2" provided screws.
2. Route wires from ON/OFF/REMOTE switch within wire channel.
3. Attach wire channel on the left side of the casing back with (4) 10 x 1/2" provided screws.
4. Attach the black and green (wires) female push-ons to the TH/TP and TH (two outside male tabs) terminals on gas valve.
5. Identify vent safety switch wire harness. The first wire is installed into magnet section on gas valve. The second wire is attached to the TH/TP terminal on gas valve. Route opposite end of vent safety switch wire harness within (2) metal clips on exterior of rear cover. Attach (2) 1/4" female push-ons on vent safety switch wire harness onto (2) 1/4" male tabs on vent safety switch which is located on the side of draft diverter.

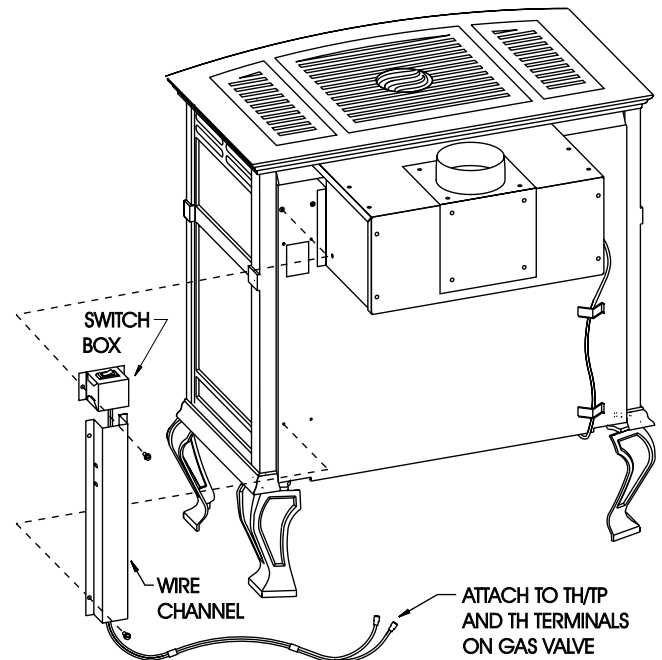


Figure 10

Venting

1. Flue pipe must be as large as the flue collar on the draft diverter.
2. Maintain an upward slope of at least 1/4 inch (6mm) per foot of horizontal run.
3. Run flue pipe as directly as possible with a minimum of elbows.
4. Flue pipe should extend through the wall of a chimney to be flush with inner wall.
5. Flue pipe must be adequately supported by metal straps.
6. Single wall vent pipe may be attached directly to the draft hood of the fireplace heater when a clearance of 2 1/2 inches (64mm) is maintained between the single wall vent pipe and the combustible wall of the room in which the fireplace heater is located. Use double wall vent pipe for clearances less than 2 1/2 inches (64mm) to combustibles.
7. For flue pipe running through walls and roof, use B-1 [1 inch (25mm) clearance to combustibles] vent pipe.
8. Chimneys should extend at least 2 feet (.6m) above the roof and above any object or nearby building within 10 feet (3m).
9. Open tees should not be used in the flue pipe.
10. Appliance must not be connected to a chimney flue that is servicing a separate solid-fuel burning appliance.

For proper venting, do not attach a 90° elbow directly to draft diverter. If possible, attach 2 feet (.6m) of straight vent pipe before an elbow is used. Use of 45° elbows is recommended.

Uninsulated single-wall metal pipe shall not be used outdoors in cold climates for venting gas utilization equipment.

Ventilation and Combustion Air

Fireplace heaters shall be installed in a location in which the facilities for ventilation permit satisfactory combustion of gas and proper venting under normal conditions. In buildings of conventional frame, brick or stone construction without tight storm windows and doors, infiltration is normally adequate to provide for combustion and draft hood dilution.

Where appliances are installed in a confined space within a building, the building being of unusually tight construction, air for combustion and ventilation must be obtained directly from outdoors or from such spaces that freely communicate with the outdoors. Under these conditions, the confined space shall be provided with two permanent openings, one near the top of the enclosure and one near the bottom; each opening shall have a free area of not less than one square inch (6.5cm²) per 1,000 BTU's (.3KW) of total input. The draft hood must be in the same atmospheric pressure zone as the combustion air inlet to the appliance and shall be so located so that the relief opening is accessible for checking vent operation.

Gas Supply (Figure 11)

Check all local codes for requirements, especially for the size and type of gas supply line required.

Recommended Gas Pipe Diameter

Pipe Length (Feet)	Schedule 40 Pipe Inside Diameter		Tubing, Type L Outside Diameter	
	Nat.	L.P.	Nat.	L.P.
0-10	1/2"	3/8"	1/2"	3/8"
	1.3 cm	1.0 cm	1.3 cm	1.0 cm
10-40	1/2"	1/2"	5/8"	1/2"
	1.3 cm	1.3 cm	1.6 cm	1.3 cm
40-100	1/2"	1/2"	3/4"	1/2"
	1.3 cm	1.3 cm	1.9 cm	1.3 cm
100-150	3/4"	1/2"	7/8"	3/4"
	1.9 cm	1.3 cm	2.2 cm	1.9 cm

Note: Never use plastic pipe. Check to confirm whether your local codes allow copper tubing or galvanized.

Note: Since some municipalities have additional local codes, it is always best to consult your local authority and installation code.

The use of the following gas connectors is recommended:

- ANS Z21.24 Appliance Connectors of Corrugated Metal Tubing and Fittings
- ANS Z21.45 Assembled Flexible Appliance Connectors of Other Than All-Metal Construction

The above connectors may be used if acceptable by the authority having jurisdiction.

Consult the current National Fuel Gas Code, ANSI Z223.1 CAN/CGA-B149 (.1 or .2) installation code.

Installing a New Main Gas Cock

Each appliance should have its own manual gas cock.

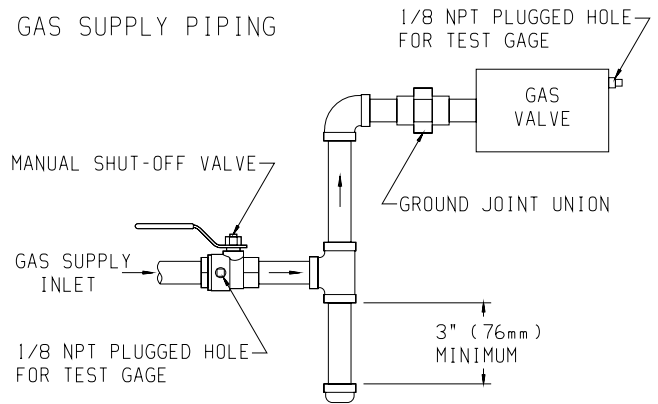
A manual main gas cock should be located in the vicinity of the unit. Where none exists, or where its size or location is not adequate, contact your local authorized installer for installation or relocation.

Compounds used on threaded joints of gas piping shall be resistant to the action of liquefied petroleum gases. The gas lines must be checked for leaks by the installer. This should be done with a soap solution, watching for bubbles on all exposed connections and, if unexposed, a pressure test should be made.

Never Use an Exposed Flame to Check for Leaks.

Appliance must be disconnected from piping at inlet of control valve and pipe capped or plugged for pressure test. Never Pressure Test With Appliance Connected; Control Valve Will Sustain Damage!

A gas valve and ground joint union should be installed in the gas line upstream of the gas control to aid in servicing. It is required by the National Fuel Gas Code that a drip line be installed near the gas inlet. This should consist of a vertical length of pipe, tee connected into the gas line, that is capped on the bottom in which condensation and foreign particles may collect.



Method of Installing A Tee Fitting Sediment Trap

Figure 11

Pressure Testing of the Gas Supply System

1. To check the inlet pressure to the gas valve, a 1/8" (3mm) N.P.T. plugged tapping, accessible for the test gauge connection, must be placed immediately upstream of the gas supply connection to the appliance.
2. The appliance, and its individual shutoff valve, must be disconnected from the gas supply piping system during any pressure testing of that system at test pressures in excess of 1/2 psig (3.5kPa).
3. The appliance must be isolated from the gas supply piping system by closing its individual manual shutoff valve during any pressure testing of the gas supply piping system at test pressures equal to or less than 1/2 psig (3.5kPa).

Attention! If one of the above procedures results in pressures in excess of 1/2 psig (14" w.c.) (3.5kPa) on the appliance gas valve, it will result in a hazardous condition.

Checking Manifold Pressure

Both Propane and Natural gas valves have a built-in pressure regulator in the gas valve. Natural gas models will have a manifold pressure of approximately 3.5" w.c. (.871kPa) for maximum input or 1.7" w.c. (.423kPa) for minimum input at the valve outlet with the inlet pressure to the valve from a minimum of 5.0" w.c. (1.245kPa) for the purpose of input adjustment to a maximum of 10.5" w.c. (2.615kPa). Propane gas models will have a manifold pressure approximately 10.0" w.c. (2.49kPa) for maximum input or 5.9" w.c. (1.469kPa) for minimum input at the valve outlet with the inlet pressure to the valve from a minimum of 11.0" w.c. (2.739kPa) for the purpose of input adjustment to a maximum of 13.0" w.c. (3.237kPa).

A 1/8" (3mm) N.P.T. plugged tapping, accessible for test gauge connection is located on the outlet side of the gas control.

Liner and Insulated Liner

When you install a vented fireplace heater into a masonry chimney you must follow these steps.

1. The chimney must be lined and sized properly. Most masonry chimneys are over sized and absorb too much heat to be considered a proper vent. If you have any doubts line the chimney with the right size liner. If it's unlined you must line it.
2. Use an insulated liner when the chimney is on the outside, three sides exposed to the weather, and there is no clay liner in the chimney. The insulation will help keep the flue gases warmer.

Insulated Vent Enclosure (Figure 12)

Vented fireplace heaters installed with the vent going directly to the outside and above the eaves can cause poor venting. The cold pipe will have a delay in proper venting and cause the fireplace heater to shut "off" by the vent safety switch. To prevent delayed venting as well as condensation of flue products an insulated enclosure is recommended.

Use type B 4" (102mm) diameter vent pipe and maintain at least a one inch (25mm) clearance to combustibles.

Use metal thimble to protect vent pipe as it passes through combustibles.

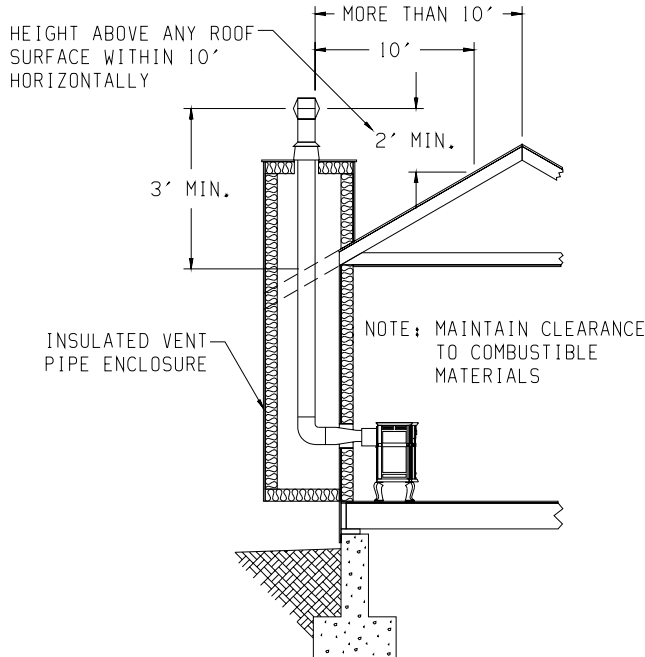


Figure 12

High Altitudes

When installing this unit at an elevation above 2000 feet (in the United States) it may be necessary to decrease the input rating by changing the existing burner orifice to a smaller size. Generally, input should be reduced 4 percent for each 1000 feet above sea level. However, if the heating value of the gas has been reduced, this general rule may not apply. Check with local gas utility for proper orifice size identification.

APPLIES TO CANADIAN MODELS ONLY FOR PROPANE GAS.
Altitude: 0-4,500 feet (0-1370 m) without orifice change.

APPLIES TO CANADIAN MODELS ONLY FOR NATURAL GAS.
Altitude 0-2,000 feet (0-610m) without orifice change.

Cet appareil est équipé pour des altitudes comprises entre 0 et 2000 pieds (0-610m) seulement.

For installations from 610-1370 metres (2,000-4,500 ft.) the orifice size (DMS) for natural gas is 39. See data plate for additional information.

For high altitude installations consult the local gas distributor or the authority having jurisdiction for proper rating methods. If the installer must convert the unit to adjust for varying altitudes, the information sticker (illustrated below) must be filled out by the installer and adhered to the appliance at the time of conversion.

THE CONVERSION SHALL BE CARRIED OUT BY A MANUFACTURER'S AUTHORIZED REPRESENTATIVE IN ACCORDANCE WITH THE REQUIREMENTS OF THE MANUFACTURER, PROVINCIAL OR TERRITORIAL AUTHORITIES HAVING JURISDICTION AND IN ACCORDANCE WITH THE REQUIREMENTS OF THE CAN/CGA-B141.1 OR CAN/CGA-B141.2 INSTALLATION CODES.

LA CONVERSION DOIT ÊTRE EFFECTUÉE CONFORMÉMENT AUX RÉGLEMENTATION PROVINCIAUX EN CAUSE ET AUX EXIGENCES DES CODES D'INSTALLATION CAN/CGA-B149.

This appliance has been converted for use at an altitude of _____
 Orifice size _____ Manifold Pressure _____
 Input (Btu/h) _____ Fuel Type _____
 Date of Conversion _____ Converted by _____
 Cet appareil a été converti au _____
 Injecteur _____ Pression à la tubulure d'alimentation _____
 Débit calorifique _____

Piezo Ignitor Button

The piezo ignitor button is located behind the valve cover. Depressing the button causes a spark to occur at the pilot.

On a new installation with air in the gas line, depress the piezo ignitor button a number of times in order to ignite the pilot.

Vent Safety Shutoff System

This heater must be properly connected to a venting system. This heater is equipped with a vent safety shutoff system.

Warning:
Operation of this heater, when not connected to a properly installed and maintained venting system or tampering with the vent safety shutoff system, can result in carbon monoxide (CO) poisoning and possible death.

This appliance needs fresh air for safe operation and must be installed so there are provisions for adequate combustion and ventilation air.

This fireplace heater is equipped with a vent safety switch. The vent safety switch will cause gas flow to the pilot to "shut off" due to improper venting or a blocked flue.

If the vent safety switch continues to "shut off" the gas flow to the pilot a qualified service person must be contacted to inspect for improper venting, blockage in the vent pipe or the vent safety switch for being defective.

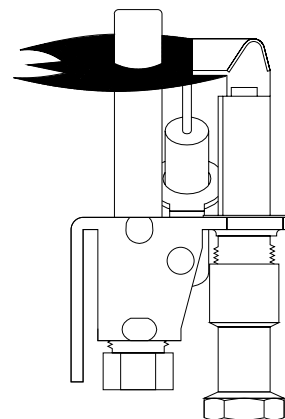
Reversible Vertical or Horizontal Draft Diverter

This fireplace heater has a reversible draft diverter. The draft diverter is installed in the vertical position at the factory. Please use the following steps to change the draft diverter from the vertical position to the horizontal position.

1. Remove (8) hex-head screws located adjacent to the flue collar on the draft diverter.
2. Rotate flue collar to the horizontal position on the draft diverter.
3. Attach flue collar to draft diverter with (8) hex-head screws from Step 1.

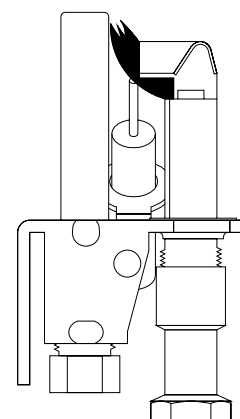
Pilot Flame Pattern (Figure 13 and Figure 14)

Figure 13 shows a correct pilot flame pattern. The correct flame will be blue and will extend beyond the thermopile. The flame will surround the thermopile just below the tip. A slight yellow flame may occur where the pilot flame and main burner flame meet. Figure 14 shows an incorrect pilot flame pattern. The incorrect pilot flame is not touching the thermopile. This will cause the thermopile to cool. When the thermopile cools, the heater will shut down.



Correct Pilot Flame Pattern

Figure 13



Incorrect Pilot Flame Pattern

Figure 14

If pilot flame pattern is incorrect, as shown in Figure 14

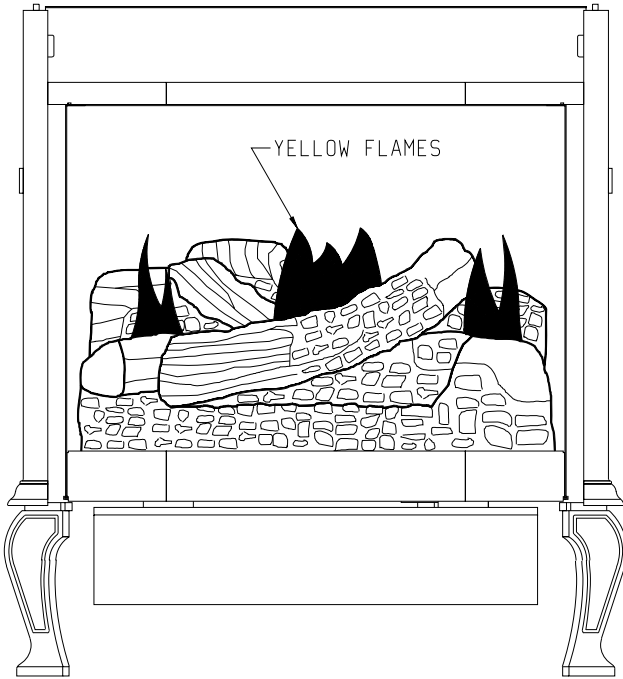
- See Troubleshooting, page 16.

Main Burner Flame Pattern (Figure 15 and Figure 16)

Figure 15 shows a correct main burner flame pattern. Figure 16 shows an incorrect main burner flame pattern.

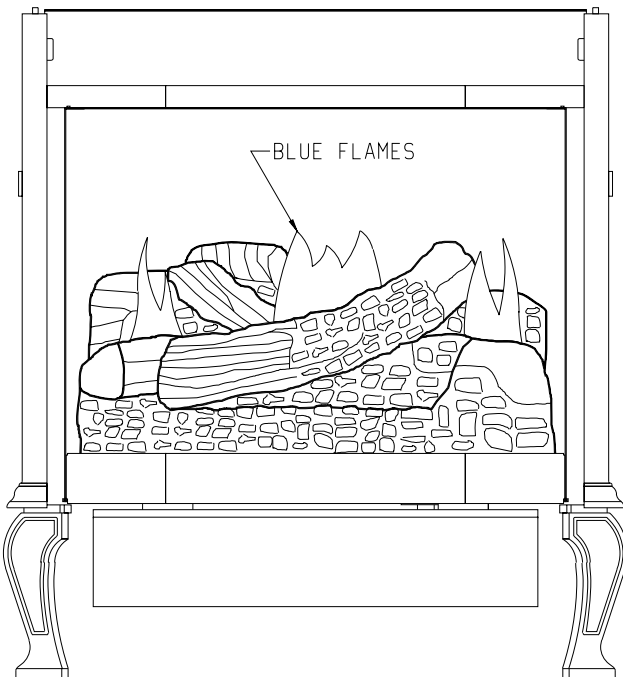
Air Shutter Adjustment

An air shutter adjusting screw is located on the exterior, bottom of the inner body. Screw air shutter adjusting screw **IN** to close air shutter top (increase yellow flame). Screw air shutter adjusting screw **OUT** to open air shutter top (decrease yellow flame).



Correct Main Burner Flame

Figure 15



Incorrect Main Burner Flame

Figure 16

If main burner flame pattern is incorrect, as shown in Figure 16

- See Troubleshooting, page 16.

Cleaning and Maintenance / Main Burner

Warning: Turn off heater and let cool before cleaning

After use, cleaning of the main burner may be required for the proper flame. The main burner may be cleaned by applying air pressure to the ports on the main burner.

Cleaning the Log Set and Firebox

During the annual inspection and maintenance appointment, the service person should clean dust, lint, and any light accumulation from the logs and the firebox area. An extra-soft brush should be used on the logs as they are extremely fragile; a vacuum cleaner may be used on the firebox. If at any time the logs cannot be removed or installed without forcing, the cause must be found. The logs must never be forced.

CAUTION: The ceramic logs are durable when handled and installed properly. However, they are delicate and may be damaged easily if not handled with care. Handling damage to the ceramic logs is not covered by warranty.

DO NOT HANDLE LOGS WHILE THEY ARE HOT. ALLOW PLENTY OF TIME FOR THE APPLIANCE TO COOL COMPLETELY BEFORE HANDLING.

OPERATING INSTRUCTIONS

CIBV-30 ON/OFF/REMOTE Switch

CIBV-30 is equipped with an ON/OFF/REMOTE switch which is located on the wiring chase. A wire harness is attached to the ON/OFF/REMOTE switch. The red, black and green (wires) female push-ons attach to the ON/OFF/REMOTE switch. At the opposite end of the wire harness, the black and green (wires) female push-ons attach to the gas valve. An additional green wire and the red wire, which are stripped and bare, will attach to the 750 millivolt wall thermostat accessory, or, to one of the other accessories that can be purchased for use with your log set.

Operation of ON/OFF/REMOTE Switch with no Accessories

To ignite main burner, turn the control knob on the gas valve from the PILOT position to the ON position. Turn the ON/OFF/REMOTE switch from the OFF position to the ON position. The additional green wire and red wire, which are stripped and bare are not used.

Operation of ON/OFF/REMOTE Switch with Accessories

750 Millivolt Wall Thermostat, GWSG-T

Connect the green and red, stripped and bare, wires on the ON/OFF/REMOTE switch wire harness to the wall thermostat. Turn the ON/OFF/REMOTE switch on the wiring chase to the REMOTE position. Set the wall thermostat to the desired temperature.

It is important to use wire of a gauge proper for the length of the wire:

RECOMMENDED WIRE GAUGES

Maximum Length	Wire Gauge
1' to 10'	18
10' to 25'	16
25' to 35'	14

Wall Switch, FWS-1

Connect the green and red, stripped and bare, wires on the ON/OFF/REMOTE switch wire harness to the wall switch. Turn the ON/OFF/REMOTE switch on the wiring chase to the REMOTE position. Pivot the rocker switch on the FWS-1 to the ON position.

Battery Operated Remote Control, FRBC-1 and FRBTC-1

Connect the green and red, stripped and bare, wires on the ON/OFF/REMOTE switch wire harness to the remote receiver that is a component in the FRBC-1 and FRBTC-1. Turn the ON/OFF/REMOTE switch on the wiring chase to the REMOTE position. Follow instructions in the FRBC-1 and FRBTC-1 to complete installation.

Note: If batteries fail in FRBC-1 or FRBTC-1, and immediate heat is desired, turn the ON/OFF/REMOTE switch on wiring chase from the REMOTE position to the ON position.

Electric (120 volt) Operated Remote Control, FREC-1

Connect the green and red, stripped and bare, wires on the ON/OFF/REMOTE switch wire harness to the wires on remote receiver that is a component in the FREC-1. Turn the ON/OFF/REMOTE switch on the wiring chase to the REMOTE position. Follow instructions in the FREC-1 to complete installation.

Note: If electric (120 volt) fails in FREC-1, and immediate heat is desired, turn the ON/OFF/REMOTE switch on wiring chase from the REMOTE position to the ON position.

Wiring of ON/OFF/REMOTE Switch with 750 Millivolt Wall Thermostat Accessory and Another Accessory

Connect the green and red, stripped and bare, wires on the ON/OFF/REMOTE switch wire harness to the 750 millivolt wall thermostat AND to the remote receiver that is a component in the FRBC-1, FREC-1 OR to the FWS-1, wall switch.

1. Connect (1) wire from the 750 millivolt wall thermostat and (1) wire from appropriate accessory to the GREEN, stripped and bare wire from the ON/OFF/REMOTE wire harness.
2. Connect (1) wire from the 750 millivolt wall thermostat and (1) wire from appropriate accessory to the RED, stripped and bare wire from the ON/OFF/REMOTE wire harness.

Note: When the appliance is in the MANUAL mode and the batteries fail in the FRBC-1 or if the electric (120 volt) fails in the FREC-1, and immediate heat is desired, turn the ON/OFF/REMOTE switch on wiring chase from the REMOTE position to the ON position.

Manual Operation

1. Turn ON/OFF/REMOTE switch on wiring chase to REMOTE position.
2. Turn wall thermostat OFF.
3. Turn accessory, FRBC-1, FREC-1 or FWS-1, ON. Appliance is now in the manual mode. You must turn the appliance ON or OFF with appropriate accessory.

Wall Thermostat Operation

1. Turn the ON/OFF/REMOTE switch on wiring chase to REMOTE position.
2. Turn accessory, FRBC-1, FREC-1 or FWS-1, OFF.
3. Turn wall thermostat ON and set appropriate temperature. Wall thermostat will cycle the appliance ON and OFF.

Installation of Remote Receiver (Figure 17)

1. Attach, from left to right, the slide-on cover plate onto the remote receiver. ON will be to the top and OFF will be to the bottom on the slide-on cover plate.
2. Push the receiver slide button onto the receiver slide switch. Reverse installation of the slide button if it is off center.
3. Attach velcro loop on the left side of the valve cover support.
4. Attach velcro hook onto remote receiver. The word TOP on the remote receiver should be to the top when installed onto valve cover support.
5. Attach velcro hook on remote receiver onto velcro loop on valve cover support.

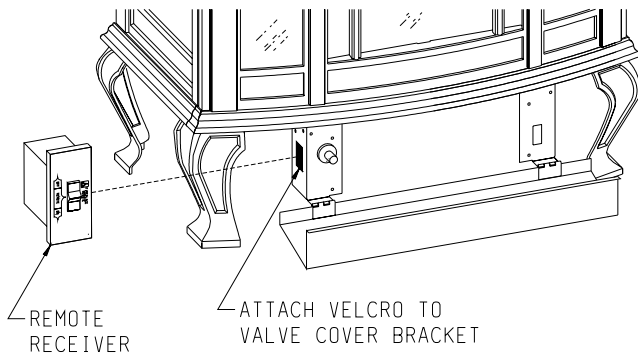
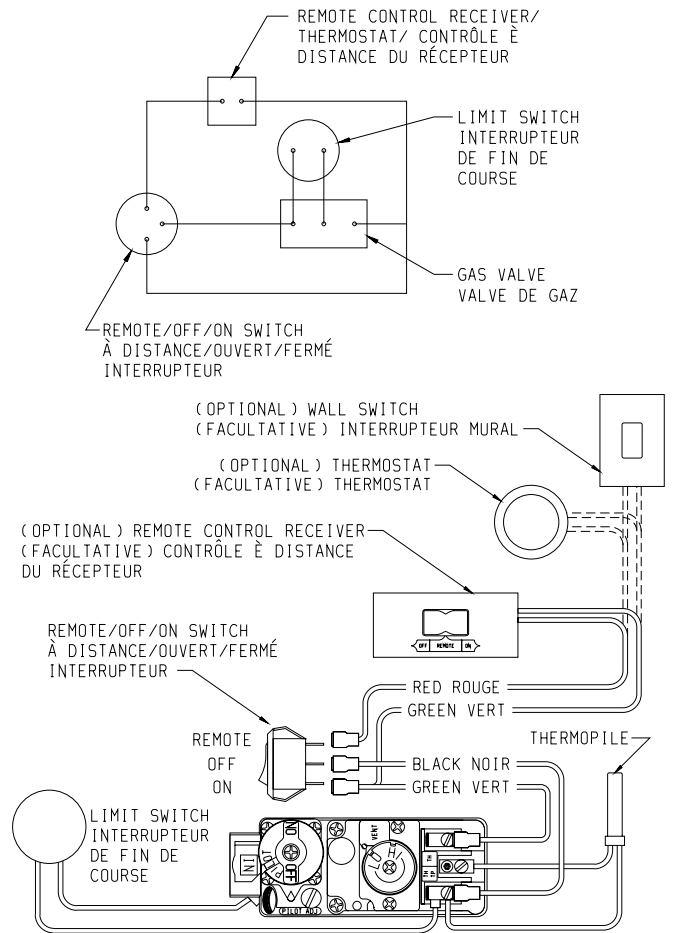


Figure 17

Wiring Diagram (Figure 18)



IF ANY OF THE ORIGINAL WIRE AS SUPPLIED WITH THIS UNIT MUST BE REPLACED, IT MUST BE REPLACED WITH NO. 18, 150°C WIRE OR ITS EQUIVALENT.

Figure 18

PLEASE NOTE

It is normal for appliances fabricated of steel to give off some expansion and/or contraction noise during the start up or cool down cycle. Similar noises are found with your furnace heat exchanger or car engine.

Glass Cleaning

It will be necessary to clean the glass periodically. During start-up condensation, which is normal, forms on the inside of the glass and causes lint, dust and other airborne particles to cling to the glass surface. Also initial paint curing may deposit a slight film on the glass. It is therefore recommended that the glass be cleaned two or three times with a non-abrasive household cleaner and warm water (we recommend gas fireplace glass cleaner). After that the glass should be cleaned two or three times during each heating season depending on the circumstances present.

General Glass Information

Only glass approved for use in Empire Comfort Systems, Inc. fireplaces may be used for replacement. The glass replacement should be done by a licensed or qualified service person.

WARNING:

1. The use of substitute glass will void all product warranties.
2. Care must be taken to avoid breakage of the glass.
3. Under no circumstances should this appliance be operated without the glass front or with a broken glass front. Replacement of the glass (with gasket) as supplied by the manufacturer should be done by a qualified service person.
4. Do not abuse the glass by striking or hitting the glass.

WARNING: Do not use abrasive cleaners on glass. Do not attempt to clean glass when glass is hot.

Failure to follow these warnings could cause a serious safety issue to the operator, such as fire or other serious conditions.

A replacement glazing/frame assembly shall be replaced as a complete unit as supplied by Empire Comfort Systems, Inc.

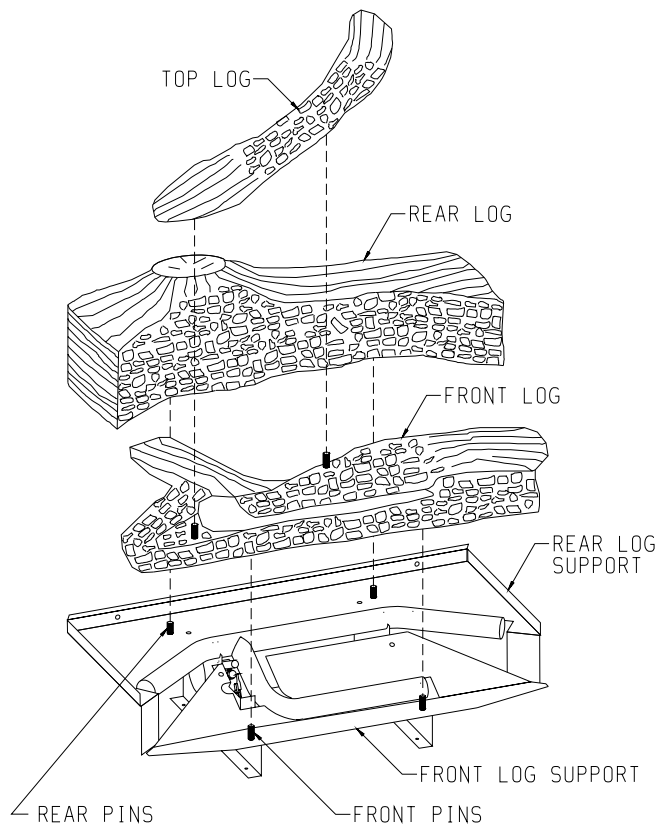


Figure 19

Installation of Logs (Figure 19 and Figure 20)

1. Lower valve cover on firebox.
2. Release two door latches at bottom of firebox.
3. Grasp bottom of glass frame, pull forward until bottom of glass frame is removed from glass frame guide and pull downward until glass frame is removed from glass frame support top.
4. Remove logs from interior of firebox. Remove all protective packaging from logs and interior of firebox.
5. Align the two rear pins on the base with the two alignment holes on the underside of the rear log. Place the rear log onto the two rear pins on the base.
6. Align the two front pins on the base with the two alignment holes on the underside of the front log. Place the front log onto the two front pins on the base.
7. Align the two alignment holes on the underside of the top log with the alignment pins on the top of front log. Place the top log onto the two pins on the front log.

8. Grasp bottom of glass frame, push upward and insert glass frame into glass frame support top, push inward and insert glass frame into glass frame guide.
9. Attach two door latches to bottom of firebox.
10. Installation of logs is completed.

Warning: Failure to position the parts in accordance with this diagram or failure to use only parts specifically approved with this appliance may result in property damage or personal injury.

Avertissement: Risque de dommages ou de blessures si les pièces ne sont pas installées conformément à ce schéma et ou si de pièces autres que celles spécifiquement approuvées avec cet appareil sont utilisées.

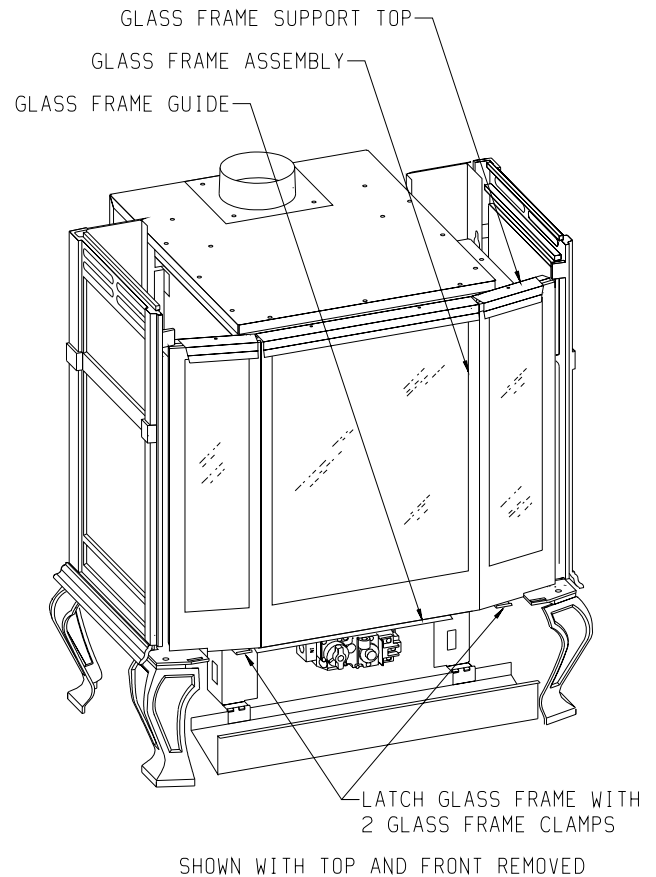


Figure 20

Replacement of Gasket on Glass Frame Assembly and Front Flange on Inner Body

1. Remove casing top from outer casing.
2. Remove casing front from outer casing.
3. Lower valve cover on firebox.
4. Release two door latches at bottom of firebox.
5. Grasp bottom of glass frame, pull forward until bottom of glass frame is removed from glass frame guide and pull downward until glass frame is removed from glass frame support top.
6. Place glass frame assembly on a non-abrasive surface. The exterior of the glass frame assembly should be facing the non-abrasive surface.
7. Remove the (6) screws and (6) nuts on the glass frame assembly.
8. Remove the (2) 1" x 13-3/4" divider brackets from the glass frame assembly.
9. Remove the gasket that is to be replaced on the glass frame and front flange on inner body. Clean the glass frame and front flange on inner body before the new gasket is attached.
10. Remove the backing material from the gasket.
11. Place the gasket around each opening in the glass frame and around the front flange on inner body.

12. Replace and attach the (2) 1" x 13-3/4" divider brackets onto the glass frame assembly with the (6) screws and (6) nuts from Step 7.
13. Grasp bottom of glass frame, push upward and insert glass frame into glass frame support top, push inward and insert glass frame into glass frame guide.
14. Attach two door latches to bottom of firebox.
15. Replace casing front onto outer casing.
16. Replace casing top onto outer casing.
17. Replacement of gasket on glass frame and front flange on inner body is completed.

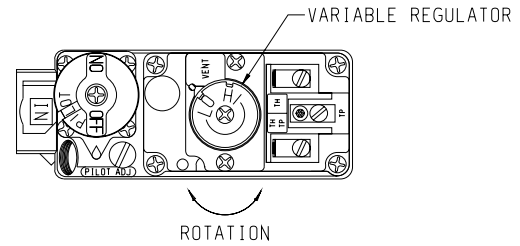


Figure 21

Operating Guidelines

Before operating this heater, please review the safety warnings pages at the beginning of this manual and those precautions and warnings listed below.

1. Know what type of ignition system this model has (standing pilot) and follow the applicable SAFETY and LIGHTING instructions.
2. Check to ensure there are no gas leaks. If you are unsure, turn gas off to the heater and call a service person or your gas utility.

CAUTION: Clothing or other flammable material should not be placed on or near the appliance.

WARNING: Children and adults should be alerted to the hazard of high surface temperature and should stay away to avoid burns or clothing ignition. Young children should be carefully supervised when they are in the same room as the appliance.

3. Tampering is DANGEROUS and voids all warranties. Any component that is found to be faulty, must be replaced with an approved component.

Initial Lighting (Figure 21)

Upon completing the gas line or turning the gas valve "ON" after it has been in the "OFF" position, a small amount of air will be in the lines. When first lighting the appliance, it will take a few minutes for the lines to purge themselves of this air. Once the purging is complete, the appliance will light and operate satisfactorily.

Subsequent lightings of the appliance will not require such purging if the gas valve is not turned to "OFF."

Standing Pilot Operation

1. Follow the SAFETY and LIGHTING INSTRUCTIONS for standing pilot controls found in this manual and on labels found attached to the appliance.

CAUTION: During the initial purging and subsequent lightings, never allow the gas valve control knob to remain depressed in the "pilot" position without pushing the piezo ignitor button at least once every second.

2. During the heating season, leave the control valve knob in the "ON" position. This will allow the pilot flame to remain lit. Turn the burner flame on or off with the appliance ON/OFF rocker switch, wall switch, remote control kits or 750 millivolt wall thermostat.

NOTE: The gas control valve allows you to increase or decrease the height of the main burner flame. The control valve has a pressure regulator with a knob as shown in Figure 21. Rotate the knob clockwise to "HI" to increase the flame height and counterclockwise to "LO" to decrease the flame height.

3. When the heating season is over, turn the on/off switch to "OFF" and the control valve to "OFF". The system, including the pilot light, will be shut down.

Maximum and Minimum Input

The gas valve on the appliance allows the input to adjust between a maximum input of 30,000 Btuh for Natural gas and Propane gas to a minimum input of 19,500 Btuh for Natural and 22,000 Btuh for Propane. Please be advised, the maximum input provides the greatest amount of yellow flame and ember glow on the log set. The minimum input substantially decreases the yellow flame and ember glow on the log set.

Maintenance & Service Instructions

IMPORTANT: Turn off gas before servicing appliance. It is recommended that a competent service technician perform these check-ups at the beginning of each heating season.

- **DO NOT put anything around the heater that will obstruct the flow of combustion and ventilation air. See clearances.**
- **DO examine venting system periodically. Clean and replace damaged parts. Examinations should be made at the start of the heating season and also in mid heating season under average conditions.**
- **Clean Burner and Control Compartment**
Keep the control compartment, logs, and burner areas surrounding the logs clean by vacuuming or brushing at least twice a year.

Cleaning Procedure

1. Let the unit cool if it has been operating.
2. Shut off gas supply .
3. Lower valve cover on firebox.
4. Release two door latches at bottom of firebox.
5. Grasp bottom of glass frame, pull forward until bottom of glass frame is removed from glass frame guide and pull downward until glass frame is removed from glass frame support top.
6. Vacuum burner compartment especially around orifice/primary air openings.
7. Grasp bottom of glass frame, push upward and insert glass frame into glass frame support top, push inward and insert glass frame into glass frame guide.
8. Attach two door latches to bottom of firebox.
9. Ignite pilot. (See Lighting/Operating Section of Manual)
10. Operate the main burner and visually check to make sure the flame pattern appears similar to the pictorial illustration shown for main burner flame pattern, Figure 15. If it appears abnormal call a service person.

FOR YOUR SAFETY READ BEFORE LIGHTING

WARNING: If you do not follow these instructions exactly, a fire or explosion may result causing property damage, personal injury or loss of life.

- A. This appliance has a pilot which must be lighted by hand. When lighting the pilot, follow these instructions exactly.
- B. **BEFORE LIGHTING** smell all around the appliance area for gas. Be sure to smell next to the floor because some gas is heavier than air and will settle on the floor.

WHAT TO DO IF YOU SMELL GAS

- Do not try to light any appliance.
- Do not touch any electrical switch; do not use any phone in your building.
- Immediately call your gas supplier from a neighbor's phone. Follow the gas supplier's instructions.

- If you cannot reach your gas supplier, call the fire department.

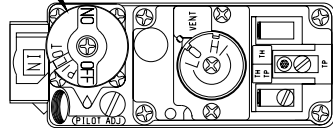
- C. Use only your hand to push in or turn the gas control knob. Never use tools. If the knob will not push in or turn by hand, don't try to repair it; call a qualified service technician. Force or attempted repair may result in a fire or explosion.

- D. Do not use this appliance if any part has been under water. Immediately call a qualified service technician to inspect the appliance and to replace any part of the control system and any gas control which has been under water.

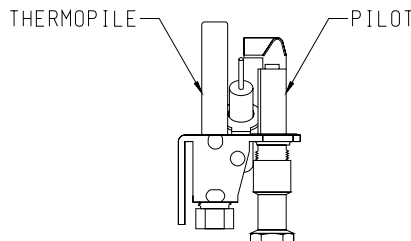
LIGHTING INSTRUCTIONS

1. **STOP!** Read the safety information above.
2. Set the thermostat to lowest setting.
3. Turn off all electric power to the appliance (if applicable).
4. Lower valve cover.
5. Push in gas control knob slightly and turn clockwise to "OFF".

GAS CONTROL KNOB SHOWN IN "OFF" POSITION.



6. Wait ten (10) minutes to clear out any gas. Then smell for gas, including near the floor. If you smell gas, **STOP!** Follow "B" in the safety information above. If you don't smell gas, go to the next step.
7. Find pilot - The pilot is attached to the main burner behind the front log.



8. Turn knob on gas control counterclockwise to "PILOT."
9. Push in gas control knob all the way and hold in. Repeatedly push the piezo ignitor button until pilot is lit. Continue to hold the control knob in for about one (1) minute after the pilot is lit. Release knob and it will pop back up. Pilot should remain lit. If it goes out, repeat steps 5 through 9.
 - If knob does not pop up when released, stop and immediately call your service technician or gas supplier.
 - If the pilot will not stay lit after several tries, turn the gas control knob to "OFF" and call your service technician or gas supplier.
10. Turn gas control knob counterclockwise to "ON".
11. Raise valve cover.
12. Turn on all electric power to the appliance (if applicable).
13. Set thermostat to desired setting.

TO TURN OFF GAS TO APPLIANCE

1. Set the thermostat to lowest setting.
2. Turn off all electric power to appliance if service is to be performed (if applicable).
3. Lower valve cover.
4. Push in gas control knob slightly and turn clockwise to "OFF". Do not force.
5. Raise valve cover.

STANDING PILOT-TROUBLE SHOOTING

With proper installation and maintenance, your new Vented Fireplace Heater should provide years of trouble-free service. If you do experience a problem, refer to the Trouble Shooting Guide below. This guide will assist a qualified service person in the diagnosis of problems and the corrective action to be taken.

1. Spark ignitor will not light pilot after repeated depressing of piezo ignitor button.

- a. Defective ignitor (no spark at electrode)
 - Check for spark at electrode and pilot; if no spark and electrode wire is properly connected, replace ignitor.
- b. No gas or low gas pressure.
 - Check remote shut off valves from fireplace. Usually there is a valve near the main. There can be more than one (1) valve between the heater and main.
 - Low pressure can be caused by a variety of situations such as a bent line, too narrow diameter of pipe, or low line pressure. Consult with plumber of gas supplier.
- c. No LP in tank.
 - Check LP (propane) tank. Refill tank.

2. Pilot will not stay lit after carefully following lighting instructions.

- a. Defective thermopile.
 - Check that pilot flame impinges on thermopile. Clean and/or adjust pilot for maximum flame impingement.
 - Ensure that the thermopile connection at the gas valve is tight.

3. Pilot burning, no gas to burner, valve knob "ON", on/off switch "ON."

- a. "On/Off" switch, wall switch, or wires defective.
 - Check "on/off" switch and wires for proper connections. Place jumper wires across terminal at switch - if burner comes on, replace defective switch. If OK, place jumper wires across switch wires at gas valve-if burner comes on, wires are faulty or connections are bad.
- b. Thermopile may not be generating sufficient milli-voltage.
 - If the pilot flame is not close enough physically to the thermopile, adjust the pilot flame.
 - Be sure the wire connections from the thermopile at the gas valve terminals are tight and the thermopile is fully inserted into the pilot bracket.
 - Check the thermopile with a millivolt meter. Take the reading at TH-TP & TP terminals of the gas valve. The meter should read 325 millivolts minimum, while holding the valve knob depressed the pilot position, with the pilot lit, and the ON/OFF switch in the OFF position. Replace the faulty thermopile if the reading is below the specified minimum.

- With the pilot in the ON position, disconnect the thermopile leads from the valve. Take a reading at the thermopile leads. The reading should be 325 millivolts minimum. Replace the thermopile if the reading is below the minimum.

- c. Defective valve.
 - Turn valve knob to "ON." Place ON/OFF switch to "ON." Check with millivolt meter at thermopile terminals. Millivolt meter should read greater than 100 M.V. If the reading is okay and the burner does not come, replace the gas valve.
- d. Plugged main burner orifice.
 - Check main burner orifice for blockage, clean main burner orifice.

4. Frequent pilot outage problem.

- a. Pilot flame may be too high or too low, or blowing (high), causing pilot safety to drop out.
 - Clean and adjust flame for maximum flame impingement on the thermopile. Follow lighting instructions carefully.

5. The pilot and main burner extinguish while in operation.

- a. No LP (Propane) in tank..
 - Check LP (Propane) tank. Refill fuel tank.
- b. Bad thermopile.
 - Replace if necessary.
- c. Improper vent cap installation.
 - Check for proper installation and freedom from debris or blockage.

6. Glass soots.

- a. Flame impingement on logs.
 - Adjust the log set so that the flame does not excessively impinge on it.
- b. Improper air shutter adjustment.
 - Adjust the air shutter.

7. Flame lifts off main burner.

- a. Insufficient oxygen being supplied.
 - Check to make sure vent cap is installed properly and free of debris. Make sure that vent system joints are tight and have no leaks.
 - Check to make sure that no material has been placed at the burner base.

PLEASE NOTE: When ordering parts, it is very important that **part number** and **description** of part coincide.

How To Order Repair Parts . . .

Parts can be ordered **only** through your **service person or dealer**. For best results, the **service person or dealer** should order parts through the distributor. Parts can be shipped directly to the **service person/dealer**.

All parts listed in the Parts List have a Part Number. When ordering parts, first obtain the Model Number from the name plate on your equipment. Then determine the Part Number (**not** the Index Number) and the Description of each part from the following appropriate illustration and list. Be sure to give all this information . . .

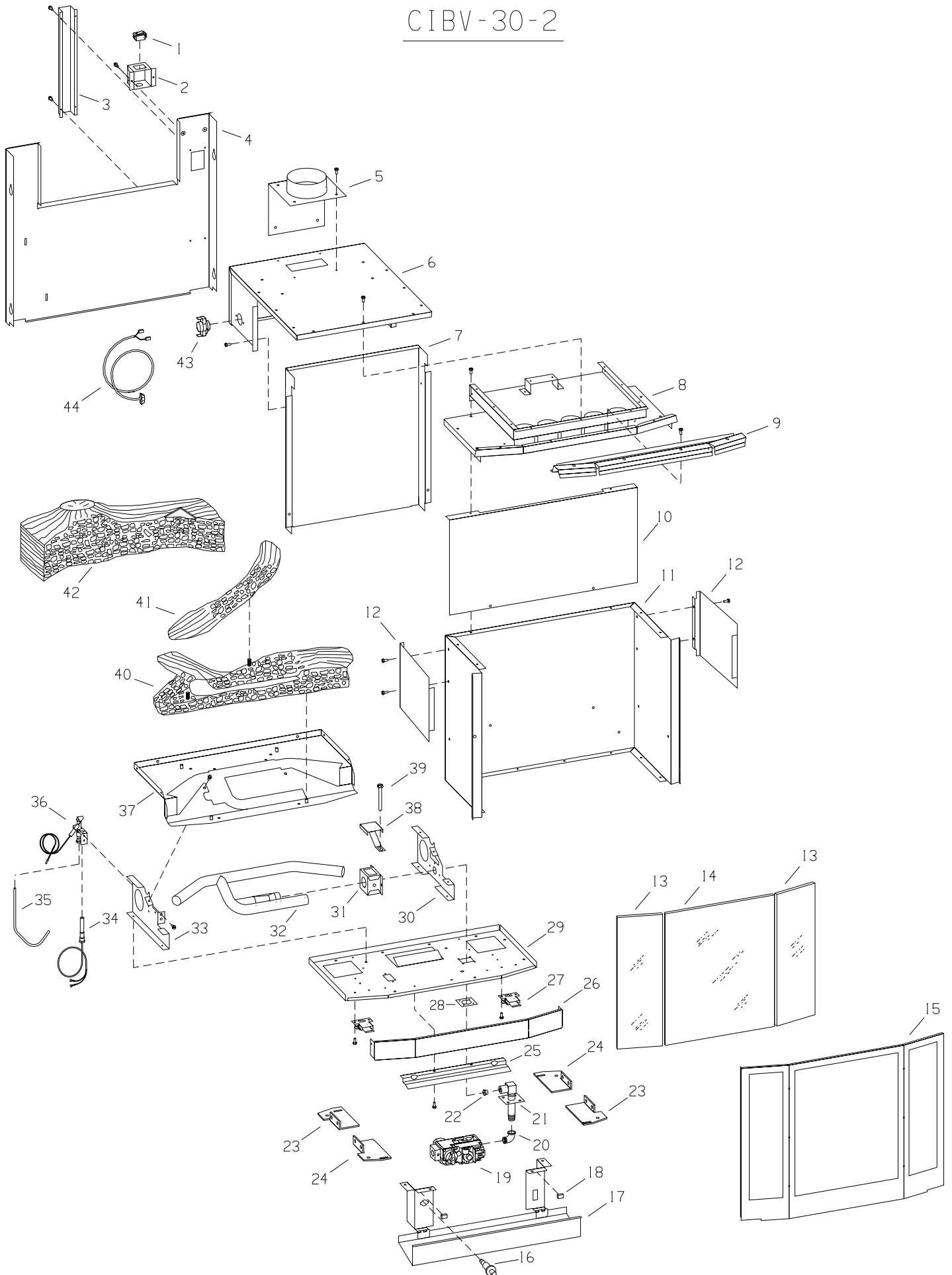
Heater Model Number _____ Part Description _____
Heater Serial Number _____ Kind of Gas (Propane or Natural) _____
Part Number _____

Do not order bolts, screws, washers or nuts. They are standard hardware items and can be purchased at any local hardware store.

Shipments contingent upon strikes, fires and all causes beyond our control.

Empire Comfort Systems, Inc. Nine Eighteen Freeburg Ave. Belleville, Illinois 62222-0529

CIBV-30-2



PLEASE NOTE: When ordering parts, it is very important that **part number** and **description** of part coincide.

Parts List for CIBV-30 Firebox

Index No.	Part Number	Description	Index No.	Part Number	Description
1	R-3436	REMOTE/OFF/ON SWITCH	27	R-4053	DOOR LATCH (2 REQUIRED)
2	CI-326	SWITCH BOX	28	M-164	MANIFOLD GASKET
3	CI-328	WIRE CHANNEL	29	CI-020	INNER BOTTOM ASSEMBLY
4	CI-336	REAR COVER WELDED ASSEMBLY	30	CI-023	BURNER BRACKET-RIGHT
5	11228	DIVERTER OUTLET ASSEMBLY	31	CI-257	AIR SHUTTER BODY
6	CI-370	DIVERTER BODY ASSEMBLY	32	R-5278	BURNER
7	CI-043	DIVERTER BACK ASSEMBLY	33	CI-022	BURNER BRACKET-LEFT
8	CI-369	INNER TOP ASSEMBLY	34	R-3475	THERMOPILE 18"
9	CI-273	GLASS FRAME SUPPORT TOP	35	CI-018	PILOT TUBING
10	CI-391	REFLECTOR	36	R-3630	PILOT ASSEMBLY COMPLETE - LPG (INCLUDES ITEM 32)
11	CI-280	INNER BODY	36	R-3631	PILOT ASSEMBLY COMPLETE - NAT (INCLUDES ITEM 32)
12	CI-274	SIDE SHIELD (2 REQUIRED)	37	CI-338	LOG SUPPORT ASSEMBLY
13	R-4582	GLASS-SIDE (2 REQUIRED)	38	CI-025	AIR SHUTTER TOP
14	R-4581	GLASS-FRONT	39	R-3758	AIR SHUTTER ADJUSTING SCREW
15	CI-269	GLASS FRAME ASSEMBLY	40	R-3642	FRONT LOG
16	R-2708	PIEZO IGNITOR	41	R-3644	TOP LOG
17	CI-143	VALVE COVER ASSEMBLY	42	R-3643	REAR LOG
18	CI-253	MAGNET ASSEMBLY (2 REQUIRED)	43	R-3981	ECO LIMIT SWITCH
19	R-3632	GAS VALVE-LPG	44	R-3768	ECO WIRE ASSEMBLY
19	R-3633	GAS VALVE-NAT	NOT SHOWN	CI-348	SWITCH BOX INSULATION
20	R-1259	3/8 NPT X 3/8 NPT STREET ELBOW	NOT SHOWN	* R-3747	LEVELING BOLT (4 REQUIRED)
21	CI-016	MANIFOLD ASSEMBLY	NOT SHOWN	* CI-007	RETAINING TAB (4 REQUIRED)
22	P-86-53L	MAIN BURNER ORIFICE-LPG	NOT SHOWN	R-3765-A	WIRE ASSEMBLY
22	P-86-38N	MAIN BURNER ORIFICE-NAT	* PART IS INCLUDED IN THE HARDWARE PACKAGE AND IS USED IN THE ASSEMBLY OF THE STOVE CASTING		
23	* CI-008	LEG PAD-A (2 REQUIRED)			
24	* CI-009	LEG PAD-B (2 REQUIRED)			
25	CI-272	GLASS FRAME GUIDE			
26	CI-288	INNER BOTTOM FACE			

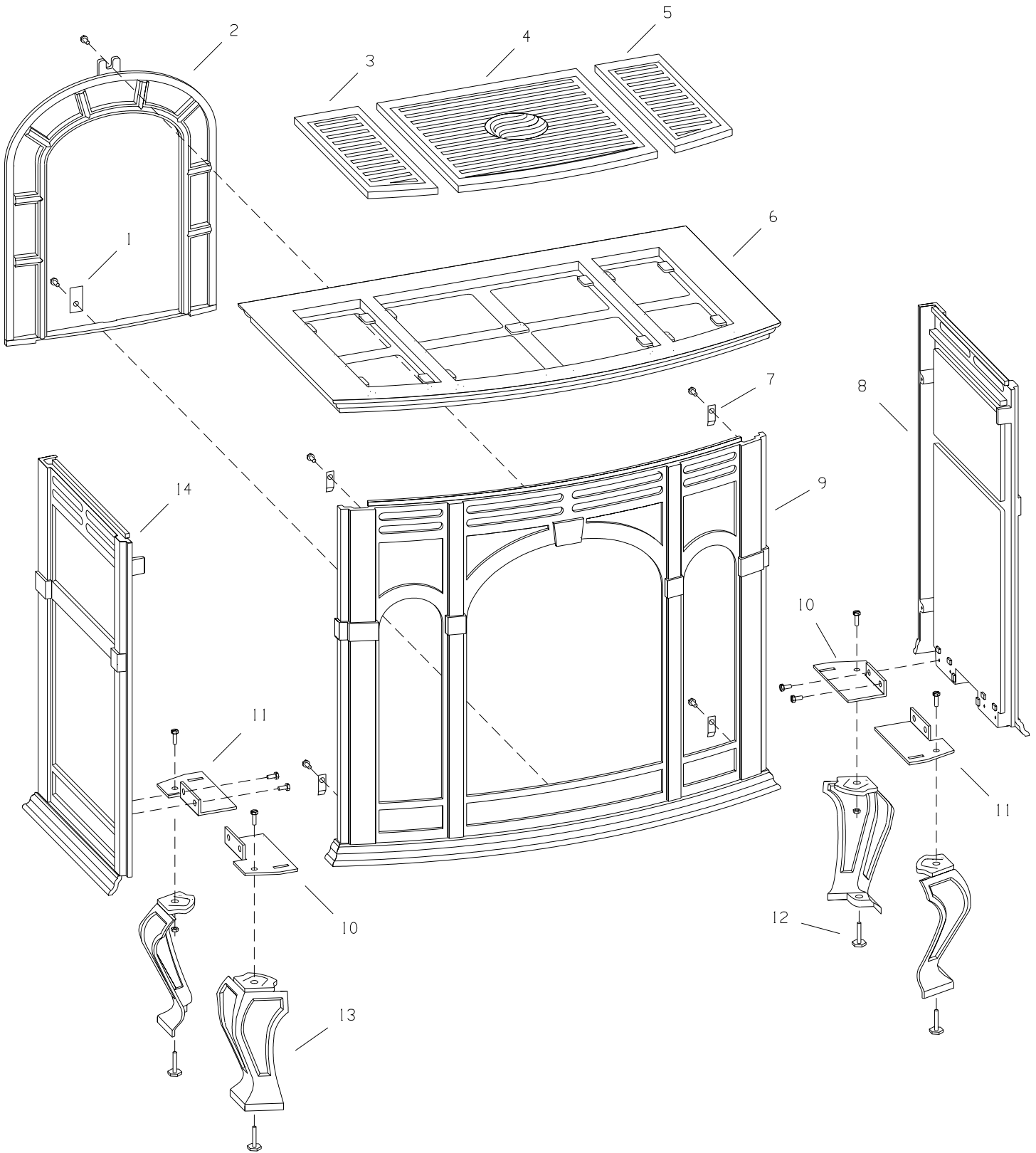
Parts List for Stove Casting

Index No.	Part Number	Description	Index No.	Part Number	Description
1	*CI-006	WINDOW RETAINING TAB	7	* CI-007	RETAINING TAB - 4 REQUIRED
2	R-3948	WINDOW (BLACK PAINT)	8	R-3946	SIDE - RIGHT (BLACK PAINT)
2	R-3688	WINDOW (BLACK ENAMEL)	8	R-3685	SIDE - RIGHT (BLACK ENAMEL)
2	R-3696	WINDOW (SAND ENAMEL)	8	R-3693	SIDE - RIGHT (SAND ENAMEL)
2	R-3704	WINDOW (GREEN ENAMEL)	8	R-3701	SIDE - RIGHT (GREEN ENAMEL)
2	R-3712	WINDOW (RED ENAMEL)	8	R-3709	SIDE - RIGHT (RED ENAMEL)
2	R-3720	WINDOW (NAVY ENAMEL)	8	R-3717	SIDE - RIGHT (NAVY ENAMEL)
3	R-3949	GRILL - LEFT (BLACK PAINT)	9	R-3947	FRONT (BLACK PAINT)
3	R-3726	GRILL - LEFT (BLACK ENAMEL)	9	R-3687	FRONT (BLACK ENAMEL)
3	R-3729	GRILL - LEFT (SAND ENAMEL)	9	R-3695	FRONT (SAND ENAMEL)
3	R-3732	GRILL - LEFT (GREEN ENAMEL)	9	R-3703	FRONT (GREEN ENAMEL)
3	R-3735	GRILL - LEFT (RED ENAMEL)	9	R-3711	FRONT (RED ENAMEL)
3	R-3738	GRILL - LEFT (NAVY ENAMEL)	9	R-3719	FRONT (NAVY ENAMEL)
4	R-3950	GRILL - CENTER (BLACK PAINT)	10	* CI-009	LEG PAD "B" - 2 REQUIRED
4	R-3727	GRILL - CENTER (BLACK ENAMEL)	11	* CI-008	LEG PAD "A" - 2 REQUIRED
4	R-3730	GRILL - CENTER (SAND ENAMEL)	12	* R-3747	LEVELING BOLT - 4 REQUIRED
4	R-3733	GRILL - CENTER (GREEN ENAMEL)	13	R-3952	LEG - 4 REQUIRED (BLACK PAINT)
4	R-3736	GRILL - CENTER (RED ENAMEL)	13	R-3742	LEG - 4 REQUIRED (BLACK ENAMEL)
4	R-3739	GRILL - CENTER (NAVY ENAMEL)	13	R-3743	LEG - 4 REQUIRED (SAND ENAMEL)
5	R-3951	GRILL - RIGHT (BLACK PAINT)	13	R-3744	LEG - 4 REQUIRED (GREEN ENAMEL)
5	R-3728	GRILL - RIGHT (BLACK ENAMEL)	13	R-3745	LEG - 4 REQUIRED (RED ENAMEL)
5	R-3731	GRILL - RIGHT (SAND ENAMEL)	13	R-3746	LEG - 4 REQUIRED (NAVY ENAMEL)
5	R-3734	GRILL - RIGHT (GREEN ENAMEL)	14	R-3945	SIDE - LEFT (BLACK PAINT)
5	R-3737	GRILL - RIGHT (RED ENAMEL)	14	R-3684	SIDE - LEFT (BLACK ENAMEL)
5	R-3740	GRILL - RIGHT (NAVY ENAMEL)	14	R-3692	SIDE - LEFT (SAND ENAMEL)
6	R-3944	TOP (BLACK PAINT)	14	R-3700	SIDE - LEFT (GREEN ENAMEL)
6	R-3683	TOP (BLACK ENAMEL)	14	R-3708	SIDE - LEFT (RED ENAMEL)
6	R-3691	TOP (SAND ENAMEL)	14	R-3716	SIDE - LEFT (NAVY ENAMEL)
6	R-3699	TOP (GREEN ENAMEL)	* PART IS NOT SUPPLIED WITH CASTING, IT IS INCLUDED IN THE FIREBOX HARDWARE PACKAGE		
6	R-3707	TOP (RED ENAMEL)			
6	R-3715	TOP (NAVY ENAMEL)			

USE ONLY MANUFACTURER'S REPLACEMENT PARTS. USE OF ANY OTHER PARTS COULD CAUSE INJURY OR DEATH.

STOVE CASTING

MODELS: CIFB-1, CIPB-1, CIPG-1, CIPS-1, CIPN-1, CIPR-1





OPTIONAL BLOWER CIB-2 Vented Fireplace Heater CIBV-30

Installing Optional CIB-2 Blower

1. Loosen, but do not remove, (4) hex-head screws located on the exterior, bottom of the appliance.
2. Position the blower assembly at the rear of the appliance. The blower assembly has (4) keyholes for attachment to the exterior, bottom of the appliance.
3. Place the large diameter holes in the keyholes over and behind the (4) hex-head screws that were loosened in Step 1. Push inward on the blower assembly to lock the keyholes into position behind the screws. Tighten (4) hex-head screws to secure blower assembly to exterior, bottom of the appliance.
4. Remove wire channel from rear cover by removing (4) hex-head screws. **Note:** If optional blower is being installed during initial installation of appliance, the wire channel will not be attached to rear cover. (Refer to **Installation of Wire Channel Assembly**, Page 8)
5. Attach fan control to FLAT, fan control bracket (Part 9A, Page 21) with (2) 6 x 1/4" screws provided in hardware package.
6. Attach fan control with bracket onto the wire channel by using (2) 8 x 1/4" screws provided in hardware package.
7. Route wires from fan control and ON/OFF/REMOTE switch within wire channel.
8. When facing the rear of the appliance, align and insert fan control with bracket into 1 3/8" x 2" opening on the left side of the rear cover.
9. Attach wire channel to rear cover by using (4) hex-head screws removed in Step 4. (Refer to **Installation of Wire Channel Assembly**, Page 8)
10. Insert AUTO/OFF/ON switch into rectangular notch on valve bracket. Be sure to insert AUTO/OFF/ON switch with letters (words) upright. (See wiring diagram)
11. Attach 1/4" push-on terminal from blue wire on the fan control to the AUTO (top) tab on the switch.
12. Attach 1/4" push-on terminal from black wire to the OFF (middle) tab on the switch.
13. Attach 1/4" push-on terminal from white wire on the fan control to the ON (bottom) tab on the switch.
14. Installation of optional CIB-2 blower is completed.

Fan Control

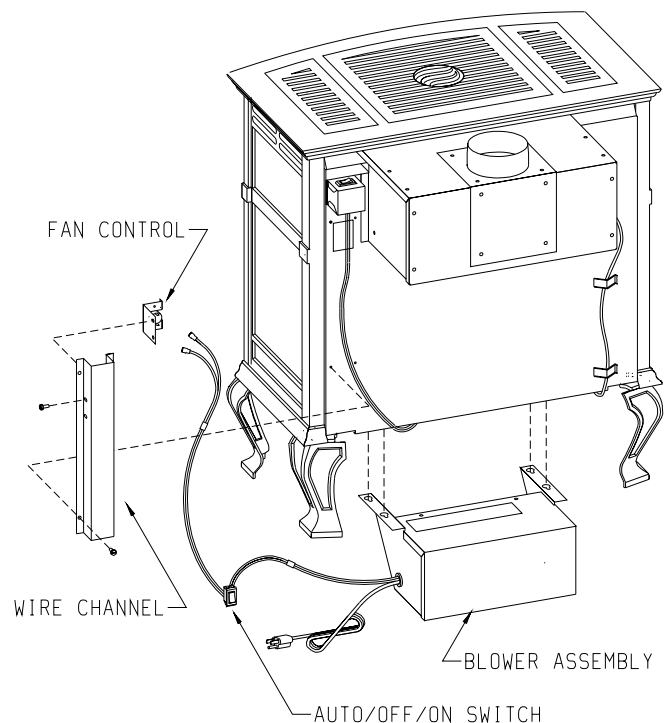
The fan control is a non-adjustable automatic type. The fan control will require between 5 and 10 minutes of main burner operation before the fan control "closes" and activates the blower. The blower will continue to run between 5 and 10 minutes after the main burner shuts off, before the fan control "opens" and deactivates the blower.

Wiring

The appliance, when installed, must be electrically grounded in accordance with local codes or, in the absence of local codes, with the *National Electrical Code*, *ANSI/NFPA 70* or *Canadian Electrical Code*, *CSA C22.1*, if an external electrical source is utilized. **This appliance is equipped with a three-prong [grounding] plug for your protection against shock hazard and should be plugged directly into a properly grounded three-prong receptacle. Do not cut or remove the grounding prong from this plug.** For an ungrounded receptacle, an adapter, which has two prongs and a wire for grounding, can be purchased, plugged into the ungrounded receptacle and its wire connected to the receptacle mounting screws. With this wire completing the ground, the appliance cord plug can be plugged into the adapter and be electrically grounded.

CAUTION: Label all wires prior to disconnection when servicing controls. Wiring errors can cause improper and dangerous operation. Verify proper operation after servicing.

WARNING:
Unplugging of blower accessory will not stop the heater from cycling. To shut heater off: Turn temperature dial or thermostat to lowest setting. Turn knob on gas control to "OFF", depressing slightly. Do not force.

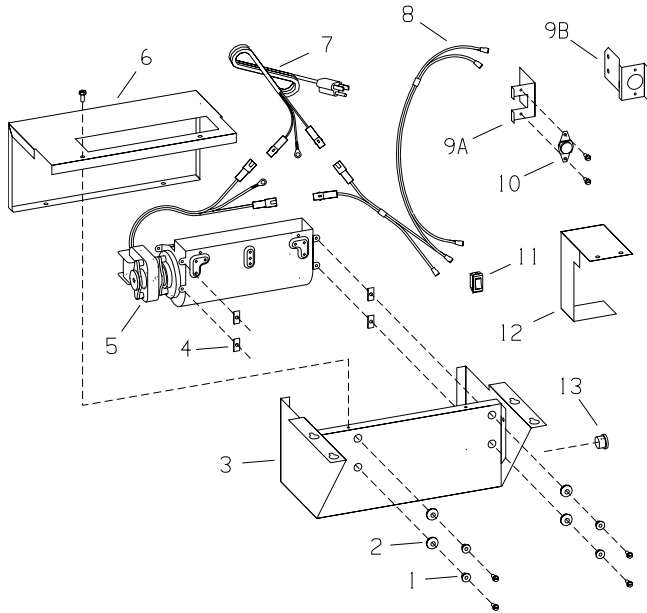


Cleaning

The blower wheel will collect lint and could require cleaning once a year. If the air output decreases or the noise level increases, it indicates a dirty wheel.

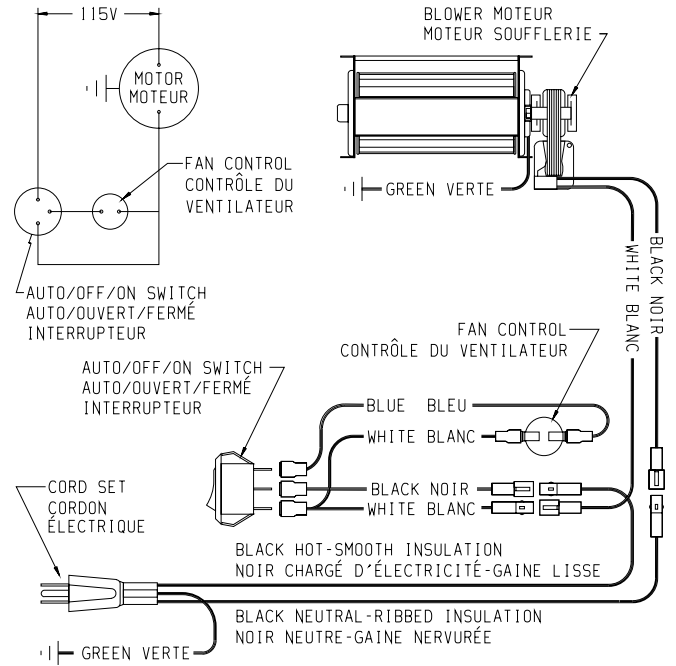
Blower Motor

The blower motor does not have oiling holes. Do not attempt to oil blower motor.



PARTS LIST

Index No.	Part No.	Description
1	R-1454	Brass Bushing (4 Required)
2	R-1499	Rubber Grommet (4 Required)
3	CI-002	Blower Housing
4	R-1517	Tinnerman Clip (4 Required)
5	R-2804-A	Blower Assembly
6	CI-003	Blower Housing Cover
7	R-2099	Cord Set
8	R-3767-A	Wire Harness
9A	CI-004	Fan Control Bracket (Use with CIBV-30, CIVF-25, CIVF-25C Only)
9B	CI-325	Fan Control Bracket (Use with CIDV-30 Only)
10	R-2503	Fan Control
11	R-2805	Auto/Off/On Switch
12	CI-220	Fan Control Shield (Use with CIVF-25 only)
13	R-1410	Bushing 7/8" Dia.



IF ANY OF THE ORIGINAL WIRE AS SUPPLIED WITH THIS UNIT MUST BE REPLACED, IT MUST BE REPLACED WITH NO. 18, 150°C WIRE OR ITS EQUIVALENT.

